

The

Friday 27th April 2018

t: 0203 623 0567 e: [newsdesk@chiswickherald.co.uk](mailto:newsdesk@chiswickherald.co.uk)



@chiswickandkew



/chiswickherald

[chiswickherald.co.uk](http://chiswickherald.co.uk)

# Chiswick Herald

## Home is where you pitch it

Discover the best backpacking range.  
Selected by us, tailored to you.

For over 40 years, our experts have been helping people prepare for adventure. Let's make this your greatest yet. Grab your tent, your favourite kit, and whoever you want to share it all with. Discover the great outdoors and the best brands in-store or online. Prepare for your next adventure under the stars with Cotswold Outdoor.

**Advice born from experience since 1974**  
Chiswick High Rd, W4 4HH | [cotswoldoutdoor.com](http://cotswoldoutdoor.com)

**COTSWOLD**  
outdoor



## Experts in preparation

Whether it's for a weekend break under the stars or a family vacation to get away from it all, our 40 years of experience in providing you with the right kit and advice will help you enjoy a family camp that's filled with fun and adventure.

## Click & Collect

Browse the entire range online, find kit you love, and collect it from any of our stores or over 10,500 Post Office locations.

## Price promise

We refuse to be beaten on price, so if you find the same product cheaper up to 7 days after your purchase, we'll refund you the difference.

Terms and conditions apply.

## Free home delivery


Too much to carry? Speak to one of our experts and we can arrange to have part or all of your order delivered straight to your door.

Terms and conditions apply.



**Lib Dems Petition**  
Against Allotment  
Redevelopment By Duke

**Appeal To Trace**  
Vulnerable Missing Man  
From Wandsworth



Thinking of buying, renting or selling? Pop in and see us at our Chiswick office or call **020 3797 2233**  
64 Turnham Green Terrace W4 | [knightfrank.co.uk](http://knightfrank.co.uk)

[DETAILS](#) PAGE 2

[FULL STORY](#) PAGE 11

## LOCAL CANDIDATES TAKE STAND AGAINST HEATHROW THIRD RUNWAY

More than 50 Hounslow councillor candidates are backing the campaign against a 3rd runway at Heathrow. Campaign group Brentford and Hounslow Stop Heathrow Expansion (Bash) has been approaching candidates from across the borough and asking them to pledge to oppose a 3rd runway. A picture of the candidate holding a pledge card is then being posted on the group's Twitter feed @bashrunway3.

The campaign has attracted support from Labour, Conservatives, Greens and Liberal Democrats, with Labour currently topping the list of supporters. In order to proceed with plans for a 3rd runway, Theresa May needs to secure the support of Parliament in a final vote, which is expected to occur shortly after the May 3 election. David Waller, the founder of Bash and a Labour candidate

Continued on P3



## Brentford Challenge To Raise Awareness Of Mental Health

Local residents are encouraged to lace-up their running shoes and take part in Brentford's biggest sporting event – while raising awareness of mental health. The event, which will take place on Sunday 24 June at Syon Park, offers an array of multi-sports activities for all the family. Run in partnership with Brentford Lock West, The Brentford Challenge is offer-

ing a 10k run, 5k run, 10k and 5k Corporate Challenge (for teams of four representing their business), a primary school challenge for local

Continued on P2



**Shakespeare Plays Makes Welcome Return To Fuller's**

P7

**MP Visits 'Outstanding' Local Service**

For People With Learning Disabilities

P9

**Heathrow Archive**

Goes On Display In West London

P10

**Appeal To Trace Vulnerable Missing Man**

From Wandsworth

P4

INSIDE | LOCAL POLITICS & COUNCIL NEWS **P12** | PROPERTY **P29** | LOCAL LIFE **P24**



**BORTHWICKS ESTATE AGENTS**  
For unparalleled local knowledge on buying, selling and letting in Chiswick and West London  
**SALES: 020 8994 8442**  
**LETTINGS: 020 8994 8441**  
3 Chiswick Rd, Station Parade, Chiswick, London W4 5NF  
**www.borthwicks.co.uk**

**AUSTINS SOLICITORS CHISWICK**  
PROBATE  
PROPERTY  
FAMILY DISPUTES  
TRUST CREATION  
WILL WRITING  
**t: 0800 377 7716**



# BRENTFORD CHALLENGE TO RAISE AWARENESS OF MENTAL HEALTH

Continued from P1

schools and 1k children’s race. This year marks a special mental health event: a 5k mental health awareness walk in partnership with West London Mental Health Trust. The walk – coined a 5k ‘Walk & Talk’ – aims to tackle the stigma around mental health and encourage more people to get active. Angela Benjamin, who lives in Hounslow and attended a similar event last year, said: “I received mental health support when I lost my two daughters – who passed away a year apart. Through their help, I can now do things on my own again. “Anyone who is going through a mental health condition should know it is not a crime; we’re still part of society.” Also on offer is yoga, Pilates, frisbee golf and boxercise at the event’s vibrant sports and health village – situated with-in the heart of Syon Park. For water lovers, adults and children can take part in an exciting paddleboarding les-

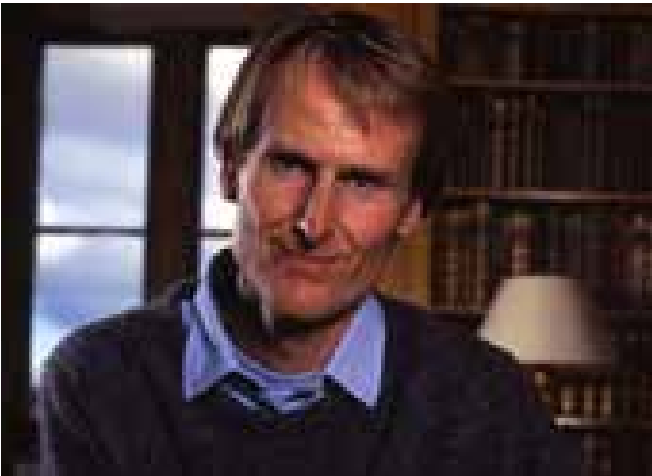
son at Brentford Lock. Lee Doyle, Chief Executive of Brentford FC Community Sports Trust, said: “Using the power of sport, the Brentford Challenge is a great way to bring the community together and raise awareness of mental health.” “I am proud to say this event offers something for all ages and abilities – helping more local people to get active and enjoy exercise. John Robinson, Development Director at Brentford Lock West, said: “The Brentford Challenge has become a popular annual event and it’s great to see even more activities on offer this year - reaching out to an even wider audience. There is a great sense of community here in Brentford - something which has been embraced by many of our residents at Brentford Lock West, and we look forward to seeing many of them as we all enjoy participating in the day’s events.” Residents can book their place at [www.brentfordchallenge.co.uk](http://www.brentfordchallenge.co.uk)



## Lib Dems Petition Against Allotment Redevelopment By Duke

Hounslow Council’s Local Area Plan includes a review of existing sites allocated for building, including building on Park Road Allotment Gardens, despite the various existing plan policies that contravenes. The Park Road allotments are identified as open space and an Asset of Community Value in the Local Development Plan. However, the designation does not prevent this privately-owned land being built upon. Ralph Percy, 12th Duke of Northumberland, has submitted plans via Northumberland Estates, which manages the Duke’s interests, to build 127 homes on the plot next to his Syon Park estate in West London. The plans, which do not include any affordable housing as defined by planning guidance, are strongly opposed by the local community.

Last year, Hounslow Planning Committee rejected proposals for the development despite the Council’s planning officers recommending approval. The Duke has previously faced opposition to development plans at Alnwick, his country residence in Northumberland. In 2014, proposals for more than 200 new homes in the town were opposed but subsequently given the go-ahead. The Park Road Allotment site is the last remaining part of Old Isleworth that is undeveloped. There have been allotment gardens on this wildlife haven since at least 1915 and the site forms part of the historic setting for the 600 year old All Saint’s Church. Once this tiny remaining part of Old Isleworth is developed, it will be lost for all future generations. Joe Bourke, Liberal Democrat Parliamentary spokesperson



Ralph Percy, 12th Duke of Northumberland. Photograph by Alan Warren.

for Brentford and Isleworth said “Allotments and Metropolitan open land are continually under threat across the borough. These amenities are highly valued by the local community, as evidenced by the long waiting list for plots. Their preservation as community assets is worth fighting for.” “Hounslow Liberal Democrats

will be running a stand at the Shrewsbury Walk Market off South Street, Isleworth next Saturday (28 April) where we will be collecting signatures for a petition against the proposed development of the Park Road Allotments. Please do come along and support our campaign to preserve this site.”

The Chiswick Herald

KEEP UP TO DATE at [www.chiswickherald.co.uk](http://www.chiswickherald.co.uk)  
Got a story? call 020 3623 0567  
[newsdesk@chiswickherald.co.uk](mailto:newsdesk@chiswickherald.co.uk)  
[@chiswickherald](https://twitter.com/chiswickherald) [chiswickherald](https://www.facebook.com/chiswickherald)

Google Play

Download on the App Store

Editor - Serena Bhattacharya: [serena@chiswickherald.co.uk](mailto:serena@chiswickherald.co.uk)  
Advertising - Annmarie Frankland: [annmarie@chiswickherald.co.uk](mailto:annmarie@chiswickherald.co.uk)  
Business Development - Amita Shankar: [amita@chiswickherald.co.uk](mailto:amita@chiswickherald.co.uk)  
Designer - Ed Fitzmaurice: [ed@chiswickherald.co.uk](mailto:ed@chiswickherald.co.uk)  
Publisher - Paul Williams: [paulwilliams@chiswickherald.co.uk](mailto:paulwilliams@chiswickherald.co.uk)

Distribution - G&T

Pick up a copy of The Chiswick Herald from:  
Sainsbury's Essex Place W4, Morrisons Brentford,  
Chiswick Library, Chiswick Town Hall,  
Strand On The Green Post Office.

The Chiswick Herald is published by PWR Media  
Unit 22, 295 Chiswick High Road, London W4 4AL  
© PWR Media 2017. All rights reserved.

## Charity ‘Grapplethon’ In Chiswick This Saturday

WaveBJJ in Chiswick is holding a 24 hour Brazilian Jiu Jitsu ‘Grapplethon’ on Saturday the 28th of April at 12pm until 12 pm on Sunday the 29th of April, for the charity Children with Cancer UK. This will involve a team of grapplers grappling for 24 hours in shifts. The rules are there must be someone grappling for the duration of the time. Brazilian Jiu Jitsu is a dynamic grappling art similar to

Judo but with more emphasis on the ground techniques. It is suitable for kids and adults of all ages. The event is also being supported by lots of local businesses such as Ten Pilates, Honest Burger Chiswick, Dominos Pizza, Fullers Brewery and others who have generously donated lots of prizes and refreshments, for our raffle and as well as to keep our grapplers going. There will

also be a prize for the grappler who “rolls” the longest round. WaveBJJ is based in an arch near Stamford Brook station on Prebend Gardens. You can pop a long to cheer them on or to join (£10 for joining with all profits going to the charity). Check out their website for more information [www.wavebjj.co](http://www.wavebjj.co).

## LOCAL CANDIDATES TAKE STAND AGAINST HEATHROW THIRD RUNWAY

Continued from P1

in Chiswick Homefields, said: “This campaign has highlighted the scale of opposition to Heathrow expansion. Tens of thousands of residents in the borough would be under the

new flightpath from a 3rd runway and air quality would get even worse if these plans go ahead. “We would urge voters to consider this issue when they cast their ballot on May 3 and to send a message to Theresa May that we don’t support

her plans. The economic case for Heathrow expansion has unravelled in recent official reports, with studies also showing that more than 2m people under the new flightpath would be impacted by aircraft noise. It’s time for the government to think again.”

HTS

Wonderful Opportunity for One Special Child

The House Schools Trust, an independent charity, is funding a means-tested bursary place at Orchard House School in Chiswick. The bursary application is open to a girl or boy to enter Year 3 or Year 4 in September 2018. This is a wonderful educational opportunity for a local child, offering excellent teaching, smaller class sizes and a friendly and inclusive school community.

The House School Trust is looking for enthusiastic and bright candidates, currently attending a state school, with the right to reside in the UK, and a gross family income not exceeding £50,000 per annum.

The successful candidate will demonstrate high academic potential and be in the top quartile of their class at school. Additional talents such as unusually strong musical, drama or sporting abilities will also be taken into consideration.

To apply, please contact us at: [info@houseschooltrust.org](mailto:info@houseschooltrust.org)

Application deadline: 31 March 2018

[www.houseschooltrust.org](http://www.houseschooltrust.org)

Helping Bright Sparks Shine

116 Ferry Quay  
Ferry Lane  
Brentford TW8 0AT

0203 617 1166  
[www.harperkitchens.com](http://www.harperkitchens.com)  
[sales@harperkitchens.com](mailto:sales@harperkitchens.com)

HARPER KITCHENS

QUALITY ENGLISH & GERMAN KITCHENS

2 minutes from Kew Bridge, FREE Parking

[www.harperkitchens.com](http://www.harperkitchens.com)



# St Nick’s In Bloom

St Nicholas Church is hosting a three day event celebrating flowers and music next month. The weekend event will have a number of opportunities for everyone in the community to enjoy all that is on offer, including floral displays and “majestic” music. The weekend starts off on Friday 18th May with a ticketed opportunity to enjoy an exclusive Preview Evening with cocktails and canapés among the stunning displays. For the remaining two days, entry is free to view the floral exhibits, and there are tours around the historic graveyard starting at 3pm. As the Vicar of St Nicholas, Father Simon Brandes said “this weekend in flowers and music marks the successful completion of this part of our development campaign. We have adapted our church for mission in the 21st century. With the help of the community we now have one of the finest organs in the area, new boilers to keep us warm which will protect the church, together with new lighting.” The celebration in flowers



and music this weekend is a springboard to the future needs of St Nicholas as there is still work to be done. It is hoped to restore the external stone work; protect the building’s stone against deterioration and restore its former glory. All of this will cost around over half a million pounds and the proceeds of this weekend will be a major step forward. For more details, visit the St Nicholas Church website: <http://www.stnicholaschiswick.org/>

# Appeal To Trace Vulnerable Missing Man From Wandsworth



Police are concerned to know the whereabouts of a man who is missing from Wandsworth. Lizhi Miao, 68, was last seen on Tuesday, 24 April at 0630hrs when he left home for a walk at Putney Hill. Mr. Miao is described as oriental, of slim build with short grey hair. At the time of his disappearance, he was wearing a coffee coloured coat, denim jeans, black shoes and carrying a brown shoulder bag. Mr. Miao suffers from severe dementia and diabetes. He may appear to be confused and disoriented. Officers are increasingly concerned for his wellbeing and would urge anyone with information on his whereabouts to call police at Wandsworth via 101 or Missing People on 116000.

# Heathrow Launches Pitch Process For Commercial Development

Heathrow Airport is launching a pitch process to encourage potential commercial development partners to share their innovative ideas on how to deliver expansion. As Heathrow prepares for the next phase of expansion, interested UK businesses, entrepreneurs and leaders are being invited to register an expression of interest. This will kick start a three part process that could see them partner with Heathrow Airport to deliver a variety of infrastructure at the airport. All ideas will be expected to focus on opportunities that further improve customer service, drive cost efficiency, grow commercial revenues and deliver sustainability targets. Pitches will also need to demonstrate how they meet the commitments outlined in the government’s draft airport national policy statement. Interested parties will be told in the next fortnight how they can register their interest and details of the eligibility criteria will be posted online. From there, time will be given for long listed parties to form top line business cases. Those that



make it through to the short list will be invited to a pitch process with senior Heathrow decision makers. Any organisation or individual that can bring significant value to the nation’s most critical infrastructure project, could be in the frame to become a future commercial development partner. John Holland-Kaye, Chief Executive Officer at Heathrow Airport said: “Over the last 10 years, Heathrow has delivered better service at lower cost, whilst becoming a leader in sustainability. We are now regularly rated as one of the best airports in the world. As we prepare the final masterplan, it is a good time to listen to any proposals that can help us to make Heathrow the most successful hub airport in the world, in a way that is sustainable, affordable and financeable.” Holland-Kaye concluded: “We have had a number of people approach us during this year’s public consultation, so we have decided to open up a competitive process that will give those with the best ideas a chance to work with us. We are willing to work with anyone who shares our values and who is committed to delivering on the promises we have made on the environment, to our neighbours and to the country.”



IRT

INTERNATIONAL REFUGEE TRUST


Rebuilding Lives Together

International Refugee Trust is a Chiswick-based charity helping to rebuild the lives of vulnerable families and refugees in South Sudan, Uganda and Jordan.

Visit: [www.irt.org.uk](http://www.irt.org.uk)

Join us on  [internationalrefugeetrust](https://www.facebook.com/internationalrefugeetrust)  [IntRefugeeTrust](https://twitter.com/IntRefugeeTrust)

# COME AND VISIT FULLER'S GRIFFIN BREWERY



## BREWERY TOURS

If you've ever wanted to know what makes Fuller's beers taste so good, you'll discover the secrets of our success on a tour of the Griffin Brewery.

Tours run hourly from 11am - 3pm, Monday to Saturday. Tour and tasting: £29 per person - Tasting Only: £18\*

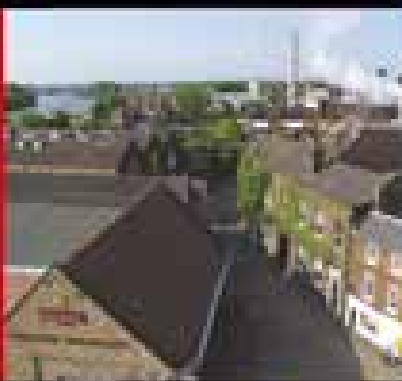
For more information and to book a tour, please visit [www.fullers.co.uk/brewery/book-a-tour](http://www.fullers.co.uk/brewery/book-a-tour)

\*Subject to availability.

## BREWERY SHOP

The Fuller's Brewery Shop is a haven for ale aficionados, but there's plenty here for everyone. Browse our side range, exclusive wines, champagnes and spirits, as well as a fantastic range of Fuller's merchandise.

**Opening Hours:**  
Monday - Friday: 10.00 - 20.00  
Saturday: 11.00 - 18.00  
Sunday: Closed



Tip-Off: Fuller's Griffin Brewery Tour

[f/Fullersbrewery](https://www.facebook.com/fullersbrewery) [@fullersbrewery](https://www.instagram.com/fullersbrewery) [#fullers](https://www.twitter.com/fullers) [www.fullers.co.uk](http://www.fullers.co.uk)

Appointments start from £69 for 15 minutes

PRIVATE GP SERVICE



# FINDING IT DIFFICULT TO SEE YOUR GP?

Don't wait. Get fast access to GP appointments at BMI Syon Clinic.

With an initial 15 minute appointment costing £69, why not go private and get easy access to appointments with an experienced doctor.

Your private GP is a qualified general practitioner who will get to know you well during your appointment, giving you the time to talk through all your needs and concerns in detail.

To find out more or book an appointment call **0800 096 2694** Or visit us at [www.bmihealthcare.co.uk/syonclinic](http://www.bmihealthcare.co.uk/syonclinic)

BMI

Syon Clinic

Serious about health. Passionate about care.





# Bluebell Walks at Osterley Park

2, 5, 6, 7, 9, 12 & 13 May, 1-2.30pm

Discover the bluebells at Osterley this spring, with a guided walk around the park with one of our ranger team.

Call 020 8232 5050 for details [nationaltrust.org.uk/osterley](http://nationaltrust.org.uk/osterley)

#nationaltrust

When you visit, donate, volunteer or join the National Trust, your support helps us to look after special places in London and the South East such as Osterley Park, Ham House and Morden Hall Park for ever, for everyone.

© National Trust 2017. The National Trust is an independent registered charity, number 205846. Photography © National Trust Images/Jeremy Dalton.



# EDUCATION REIMAGINED AT ISL LONDON

The International School of London is a culturally diverse community which fosters a passion and enthusiasm for learning, through outstanding educational practices. Students’ cultural and linguistic identities are valued and nurtured through our international curriculum and Mother Tongue programme. Our school develops the attitudes, skills and understanding needed for active and responsible contributions to both local and global communities. At the International School of London, we believe in:

- Empowering students to maximise their learning opportunities and to fulfil their potential.
- Actively integrating cultural diversity in the curriculum.
- Creating inclusive, vibrant and innovative learning communities.
- Offering a diverse and extensive international programme that supports personal, social and professional growth.

So how do we do this and what makes us different? Our approach to teaching and learning is well illustrated by this example.

Imagine you are in a Grade 7 History lesson. The topic is the British Empire between the wars; the objective to consolidate student understanding of the vast range of the empire in the inter-war period and to grasp the growing economic function of the empire at that time. The class are all facing the front of the room. The teacher hands out a worksheet with a blank map of the world. All the students start shading in the colonies, the British and self-governing dominions, India, protectorates etc. After that she discusses the changing nature of the empire and why trade was important. This may sound like a pretty standard lesson but there are issues with it. This way of teaching provides all students with the same approach, the same diet. Educational research shows that this, ‘one size fits all’ approach is not effective for the majority of students. What if instead, the teacher asked the students what they can learn about the Empire from a Christmas pudding? She shows them an advert for the Empire Christmas Pudding

of 1925, brings in ingredients to show them, gives them a list of ingredients and asks them to guess, working in teams, where in the empire the ingredients come from. The more serious discussions about the structure of the Empire can follow but still with a focus on economic trade showing Empire adverts and asking students what the sources tell us. Based on student prior knowledge a range of activities can follow. These might include working in groups to produce a report about the state of the empire, working on their own to focus on a specific theme e.g. sugar and the slave trade, a study to show how a country, for example India, moved from its governance in the 1930s to present day. I know which approach I would prefer and which would result in deeper learning. The latter also allows a far more global and intercultural approach to the subject matter and provides opportunities for students to make links across subjects and to consider relationships between history and the present. It enables students to apply their own unique experiences in the classroom and allows them opportunities to express their own opinions. There is much evidence to suggest an inquiry based approach to learning has a direct correlation to student achievement. So, what does this look like in (and beyond) the classroom at the International School of London? How do teachers create a culture of deep learning that is exciting and effective and enables students to make excellent progress? We encourage our teachers to:

- Pose problems and set questions appropriate to the individual learner.
- Build a sense of emotional security within the class.
- Work as a mentor and facilitator – this means providing a range of approaches and strategies and to personalise learning.
- Help students make connections between subjects.
- Develop rich tasks to challenge all students.
- Provide opportunities for reflection and review.
- Continuously assess, provide feedback and set targets with students.

**Sarah Pearson, Principal**



WINSER LONDON  
SMART WOMENSWEAR. SMART PRICES.

NEW  
BOUTIQUE  
NOW OPEN

41 DUKE OF YORK SQUARE,  
CHELSEA, LONDON SW3 4LY

Cotton Striped Shift Dress £115

WINSERLONDON.COM

# Shakespeare Plays Makes Welcome Return To Fuller’s

Returning for another year, Fuller’s Inns is delighted to announce Shakespeare in the Garden 2018, in association with Open Bar. Bigger and better than even before, this year sees Open Bar interpret two of Shakespeare’s funniest plays: Much Ado About Nothing and A Midsummer Night’s Dream. From Thursday 12 July 2018 running through to Thursday 2 August 2018, Open Bar will put on 15 performances of Much Ado About Nothing across 12 Fuller’s pubs. Then from Tuesday 31 July 2018 until Saturday 15 September, the Company will take on A Midsummer Night’s Dream. This run will include 27 performances, including 17 pubs and for the first time in Shakespeare in the Garden history, there will be a very special performance at Fuller’s Brewery in Chiswick. Delicious, fresh food will be available to purchase at each pub, including gourmet bar snacks and bespoke pre-performance pub menus. Each bar will, as always, be well stocked with a great array of beers, including Fuller’s flag-

ship brand London Pride and award winning Frontier Craft Lager. There will also be a wide variety of wines and spirits. Jonathon Swaine, Managing Director of Fuller’s Inns, said: “I am thrilled to be welcoming Open Bar Theatre back for another year – not for one show but two of Shakespeare’s famous plays. This is always a personal highlight in the Fuller’s event calendar. For me, nothing beats relaxing in a pub on a warm summer’s evening, enjoying a delicious pint and watching some first-class entertainment. “It is brilliant that Shakespeare in the Garden is making its debut at our Griffin Brewery in Chiswick – our wisteria is the perfect setting for A Midsummer Night’s Dream and I cannot wait to see how creative the actors will be with this unique setting.” “Full of gumption, pace and enthusiasm.” \*\*\*\*\* West End Wilma



## ST BENEDICT’S SCHOOL EALING

a minimis incipe

Outstanding Catholic Independent school for boys & girls aged 3 - 18

**Senior School Open Morning - Thursday 3 May**  
**Nursery & Junior School Open Morning - Thursday 24 May**



*“The quality of the pupils’ personal development is excellent.”* ISI April 2017

View our website for a full list of our Open Events or arrange a personal visit with our Registrar, Louise Pepper, on 020 8862 2254

[www.stbenedicts.org.uk](http://www.stbenedicts.org.uk)





# Brentford Celebrates Refugees' Contribution To Football

On Saturday Brentford FC Community Sports Trust teamed up with QPR in the Community to celebrate the contribution refugee players make to the beautiful game, as part of Amnesty International's Football Welcomes initiative.

Ahead of the west London derby with QPR, young people from Brentford's Premier League Kicks project played a memorable match against young participants from QPR's community coaching programme. Many of the young players who took part had parents or grandparents who originally came to the UK as refugees.

Football Welcomes, a week-end of action now in its second year, highlights the role of refugee players in UK football - from a group of Spanish Civil War child refugees who sailed from Bilbao to Southampton in May 1937 and went on to play professionally here in the 1940s and 50s, to the likes of Arsenal's Granit Xhaka, Stoke City's Xherdan Shaqiri and Manchester City Women's Nadia Nadim today. Fifteen-year-old Ali Sohrabi, who took part in the match on behalf of Brentford, said: "My parents are from Afghanistan and Mongolia so events like this are really important for me. It's a great way to bring people from all backgrounds together; I think football can be a powerful mechanism in solving any divisions in the local community."

Supported by a range of Premier League clubs, the English Football League and the FA Women's Super League, as



well as grassroots and non-league teams, Football Welcomes also aims to highlight the important role football clubs can play in welcoming refugees and promoting integration. Just before kick-off, the young people stood on Griffin Park's hallowed turf and took part in the exciting guard of honour

– while wearing the iconic Football Welcomes shirts. Naomi Westland, Football Welcomes Manager at Amnesty International UK said: "We are delighted Brentford FC is taking part in Football Welcomes this year. With so many clubs across the country participating, the message from football is clear – refu-

gees are welcome in the UK. At a time when hate-filled rhetoric so often fills our newspapers and social media timelines, this shows that there is another story to be told. "Violence and persecution

around the world are forcing people to flee their homes and look for safety in communities elsewhere, and a small number make it to the UK. Football can give people a sense of purpose and belonging, and football clubs are at the

heart of our towns and cities and have an important role to play in welcoming refugees and helping to promote respect, understanding and integration."



Chiswick/Brentford  
020 8847 0077  
space-station.co.uk

Secure storage units in **Chiswick** & **Brentford** with free removals

- Free removals into your storage unit
- Secure, individually alarmed units with PIN-coded access
- Humidity control providing optimum storage conditions
- Convenient crate hire service

Packing boxes and bubble wrap stocked in store



Get free removals call now



Looking after your valuables since 1983

Call us on **020 8847 0077** for a personalised quote or visit: **space-station.co.uk**



Outstanding Care

Time and again our patients rate us as one of the best private hospitals with 99% rating our overall quality of care as Excellent or Very Good\*

- Exceptional nursing
- Highly skilled Consultants
- New state of the art operating theatres
- New cardiac diagnostic facility
- Recognised by all major insurers
- Fixed price surgery and finance packages available

Call: 020 8949 9000  
Email: enquiries@newvictoria.co.uk  
Visit: www.newvictoria.co.uk  
Find us: Just off the A3  
184 Coombe Lane West  
Kingston KT2 7EG



NEW VICTORIA HOSPITAL  
Exceptional care for your health

Chiswick Herald Friday 27th April 2018chiswickherald.co.uk

## New Task Force To Target Violent Crime

The Met has recently announced a new Violent Crime Task Force composed of full-time, specially selected, ring-fenced and dedicated police officers, who will solely focus on violent crime, weapon-enabled crime and serious criminality. The team will use a full range of tactics to identify, target and arrest offenders, and leave a legacy of community impact in the boroughs they are deployed to.

These will include covert and overt tactics specifically targeting street level offenders as well as those who feed criminality. The unit will be supported by Borough officers, the Trident and Area Crime Command and specialist units, as well as community partners. This approach will deliver policing above and below ground allowing a sustained and targeted approach to stopping and solving murders and

knife crimes. Uniformed officers will be highly visible as they crack down on offending on the capital's streets. + The Met has previously been running Operation Sceptre with two proactive teams in North and South London who focus alternately between knife crime, violent crime and moped-enabled crime.

## MP Visits ‘Outstanding’ Local Service For People With Learning Disabilities

A group of local people with learning disabilities were delighted to welcome Ruth Cadbury, MP for Brentford and Isleworth, for afternoon tea at their home this week. Certitude, the organisation supporting people at the house, has recently been awarded an ‘outstanding’ by the Care Quality Commission (CQC) for the support it provides in Hounslow - an award level only achieved by the top 2% of adult social care providers. Certitude CEO, Aisling Duffy and House Manager, Jo Watkins were on hand to greet the MP and explain how they set about creating a cosy and homely setting while also providing the highest levels of support for the people who live there.

Yvette Watson who lives at the house said: "It was great fun to meet my local MP. I showed her my book about my holiday and I enjoyed eating the cakes!" Aisling Duffy says: "It was a pleasure to welcome Ruth Cadbury MP this afternoon and to show her how excellent support is being achieved, even in challeng-

ing economic circumstances. I hope this visit has demonstrated that – with right kind of support – everyone can live fulfilled and enriched lives. "Our staff work extremely hard but they also love what they do and baking with the whole household is a favourite pastime – which meant we could all enjoy this delicious afternoon tea." Ruth Cadbury commented: "I have enjoyed learning more from Certitude staff about how they support people with learning disabilities in Isleworth. It was good to hear that the people I met feel very welcome in their neighbour-

hood and are involved in the local community. With government cuts to social care it is crucial those with the most complex needs are not left socially isolated, vulnerable and lonely." Certitude staff are on hand, round-the-clock at the house in Isleworth and use traditional and high-tech ways to communicate with people who live there to give them as much control over their lives as possible. Staff also encourage local community connections through involvement in community groups, sports and activities and outings to interesting events and places.

Affordable luxury

SCHMIDT are Europe's leading kitchen brand

Responsible, flexible and creative engineering, we offer the best of both worlds: beautiful and affordable kitchen solutions designed with the commitment and quality of service that distinguishes design-led manufacturers and kitchen brands. Our complete installation service ensures an efficient, stress-free fitting, with Schmitt you don't have to deal with the cost and the hassle of subcontracted quality and timing of installation jobs.



323 King St. Hammersmith W6 9TH  
Schmidt Hammersmith | 020 3714 6000  
design@schmidt-hammersmith.co.uk



SCHMIDT  
Kitchens and Interior Solutions



MAIL BOXES ETC.

post, parcel & print centre

Send all your post, parcels & shopping purchases from Mail Boxes Etc.





295 Chiswick High Road  
London W4 4HH  
Tel: 020 8996 0796  
www.mbe.co.uk/Londonchiswick

Mail Boxes Etc. Stores are owned and operated by licensed franchisees of Mail Boxes Etc. (UK) Limited in the UK and Ireland © 2018 Mail Boxes Etc.



# Heathrow Archive Goes On Display In West London

‘Heathrow: The Journey’ focussing on the long history of the UK’s busiest airport, opens today at University of West London’s (UWL) campus in St Mary’s Road, Ealing. The first ever Heathrow exhibition will feature a wealth of never-before-seen items, specially selected from the airport’s archive, which have been permanently donated for the public to view for free. Artefacts dating back to the 1940s tell the story of Heathrow via an exciting mix of media including motion-detection audio, memorable photos of Beatlemania, Princess Diana and other famous passengers including movie star and glamour queen Sophia Loren. Enticing travel brochures from the golden age of air travel, a selection of airline pennants and postcards, historic images and videos of the first concorde, maps and technical drawings all feature. Last night a launch event to mark the occasion was hosted by Professor Peter John, Vice-Chancellor of UWL and at-

tended by Heathrow’s Chief Executive John Holland-Kaye, and a number of local business and community figures. Heathrow’s Chief Executive John Holland-Kaye said: “Heathrow has witnessed major historical events, and hosted many remarkable people throughout its long history. We are proud to be Britain’s front door and hope the students, aviation enthusiasts and local people that see this exhibition can feel the same. We were especially pleased to partner with the University of West London Vice Chancellor Professor Peter John said: “People can discover and appreciate an extremely rich heritage at ‘Heathrow: The Journey’ and we are delighted to host this exhibition which charts its development into one of the world’s leading



airports. Heathrow is located inside the University’s catchment area and we enjoy a close business partnership which delivers excellent opportunities for our students – the next generation of talent. Thanks to this relationship,

many of our graduates go on to enjoy successful careers connected to Heathrow Airport and we look forward to this continuing long into the future.” ‘Heathrow: The Journey’ has been made possible by dona-

tions from Heathrow and the Heritage Lottery Fund donating £100,000 and £79,400 respectively. These donations enable the archive to be preserved for generations to come at UWL, as well as funding this exhibition which

charts an important part of Great Britain’s aviation history. Housed at the heart of the university, it will be open daily to the public and free-to-enter.

# NO GREEN CANDIDATE FOR TURNHAM GREEN WARD



Earlier this month, the Liberal Democrats and Green Party issued an official statement explaining why they have chosen to stand aside in two Hounslow wards. The release referred to the first past the post (FPTP)

voting system as the main reason, saying that it penalised alternative parties. Consequently, there will be no Green candidate standing in Turnham Green ward and no Liberal Democrat standing in Brentford ward. Both parties

believe that this is the best way to break through the Blue/Red ceiling which the FPTP voting system inflicts on Hounslow.

# Heathrow Has Busiest Ever Departures Day



Heathrow welcomes its 17th consecutive record month, with 6.5 million passengers in March. Easter getaway, coupled with half term, led to the airport having its busiest departures day ever, with over 136,000 departing passengers travelling on the 30th March was also an award-winning month, as Heathrow’s Terminal 2 beat international counterparts to win ‘World’s Best Airport Terminal’ for the first time in the 2018 Skytrax

World Airport Awards. New routes launched by Hainan Airlines and Tianjin Airlines provided the UK’s first direct connections to the growing cities of Changsha and X’ian. Qantas also began its first direct service to Perth from Heathrow – offering the fastest route to Australia for both UK cargo and passengers. Heathrow CEO John Holland-Kaye said: “The booming growth in passenger numbers and cargo,

particularly from emerging markets, underpins the urgency to secure Britain’s economic future with a third runway at Heathrow – which has now been backed by the cross-party Transport Select Committee. We are delighted that passengers have rated us one of the top ten airports worldwide, recognising the huge improvements in service we have made over the last few years”



W4 HAIR & BEAUTY

Shellac ENVIRON  lycon O-P-I


L'OREAL 



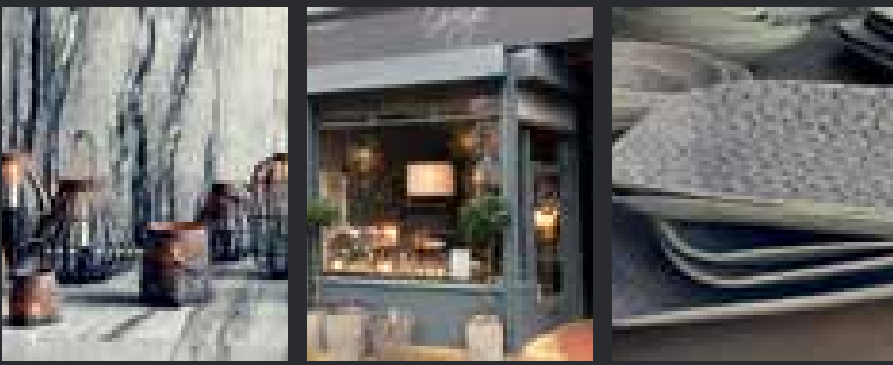
 

66 Southfield Rd, Chiswick W4 1BD  
t: 020 8742 1594 w: w4hairandbeauty.com

NEW INDEPENDANT SHOP IN CHISWICK






LIFESTYLE BOUTIQUE



1 BEDFORD CORNER  
SOUTH PARADE  
CHISWICK W4 1LD

WWW.GREIGE.CO.UK  
020 3141 9030

 @greigeuk  @greigeuk  @greige\_lifestyle

3D LIPO ULTIMATE COMES TO THE COVE SPA CHISWICK



**GREAT RESULTS**

3D-lipo has consistently been in the press and talked about by top celebrities.

3D-lipo is probably one of the most advanced machines of its type and offers a new dimension in non-surgical fat removal, treatment of cellulite & skin tightening in one award winning machine.

The Ultimate combines world-class treatments for both the face and body!

The Results Speak for Themselves...

For further info call  
**020 8995 2293**

The Cove Spa, 88-92 Chiswick High Rd, Chiswick, W4 3AL



**Austin's Solicitors** is a Chiswick based firm specialising in property, (residential and commercial), landlord & tenant, probate, trusts and wills.

We have assisted clients and companies in the Greater London area since 2004.

We are accredited by the Society of Trust & Estate Practitioners (STEP) for probate, wills and trusts and adhere to their will writing code.

In addition we hold the Law Society's Lexcel quality standard for legal management and Conveyancing Quality Standard (CQS).

We pride ourselves on our approachability, efficiency and transparency. Fixed fees are available on most matters.

For more information on our work and achievements to date, visit our website at [WWW.AUSTINSANDCO.CO.UK](http://WWW.AUSTINSANDCO.CO.UK)

t: 0800 3777716  
e: [property@austinsandco.co.uk](mailto:property@austinsandco.co.uk)  
Building 3, Chiswick Park 566, Chiswick High Road, W4 5YA.

Authorised and Regulated by the Solicitors Regulation Authority SRA No. 404076



## Brexit: Chiswick Lib Dem Candidates Back People’s Vote UK

Local Lib Dems Call on Conservatives to clarify their Brexit Position - Chiswick Liberal Democrat council candidates are backing a new cross party campaign to get the British People a vote on the final Brexit deal. The campaign, called the People's Vote, was launched in London on Sunday April 15th and saw a cross party group demanding the details of the final deal are put to British voters for approval. Chiswick Liberal Democrat council candidates believe it is only now that the cost and complexity of Brexit are becoming clear and that the Brexit, which was promised by the Leave campaigners is simply not going to happen. Francis Beddington, Liberal Democrat candidate in Riverside, said: 'Chiswick's Liberal Democrat council candidates are 100% behind the new People's Vote campaign. We believe that Brexit is already hurting public services, the economy and NHS. If elected on May 3rd, we will do our ut-



most to support the campaign as councillors and ensure the residents of Chiswick, who overwhelmingly rejected Brexit, have councillors who truly reflect their views on this momentous national and local issue.' The Chiswick Liberal Democrat team also criticised the Brexit policy of the Conservative and Labour parties. Guy de Boursac, Liberal Democrat candidate for Riverside, said: 'In Chiswick, Labour is trying to pretend that it is

an anti-Brexit party, when its leader clearly loves Brexit. The Conservatives are running scared of the issue, too. They have Brexit supporting candidates and by backing the Conservatives you're backing the party that is forcing through Brexit, despite the fact their own reports show Brexit will make us poorer. If that wasn't enough, they want a Third Runway at Heathrow!'

## Hounslow Green Party Release Local Manifesto



Hounslow Green Party has published their manifesto on their website: [hounslow.greenparty.org.uk](http://hounslow.greenparty.org.uk) The manifesto has specific local policies on climate change, local planning and the built environment, pollution and

transport. They call for higher standards in building regulations for new homes, for better insulation and lower energy required to run. They also mention affordable housing and London as a National

Park city. Particularly relevant for Chiswick residents are their pledges to fight the Heathrow expansion, and build Cycle Super Highway 9.

## Cutting Plastic Waste: Sooner Rather than Later!

by **Ruth Cadbury MP**

One of the issues that comes up at nearly every Q&A session I attend with local school children is the issue of plastic pollution. Our young people are really concerned about the impact on our earth, particularly on ocean life and they rightly ask what I'm doing about this. Plastic makes up so much of what we consume. I ran the London marathon on Sunday and in order to keep our fluid levels up in the heat we had no choice but to use single-use bottles that created mountains of plastic bottles along the route. Whilst those water bottles were 100 per cent recyclable, and the bottles themselves contain 20 per cent recycled material, the fact is every day we use such bottles once, at enormous cost to the environment. Plastic waste is a regular feature locally, along the banks of Thames and floating in Grand Union Canal. Far away from London in the remoteness of the Arctic, scientists this week found a record amount of



plastic waste, raising concern about the impact on marine life and human health. They found up to 12,000 pieces of microplastic particles per litre of Arctic sea ice. These tiny plastic particles are believed to have found their way into our food chains from the millions of tonnes of plastic waste dumped into the oceans every year which breaks down and is consumed by marine animals. While the pollution of the Arctic may seem like a distant issue, a Plymouth University study found that plastic was found in a third of UK-caught fish, including cod, haddock, mackerel and shellfish. Within Parliament where ten thousand people work, a mountain of single-use plastic-lined cups, packaging, bottles and cutlery is

thrown away every day. I have pressed for Parliament to go plastic-free in the belief that we should be setting the best example and leading the way for all large workplaces, and because I believe that we cannot push for better workplace environment policies, if we don't put our own house in order first. We can all do our bit; for instance since I have started to carry a reusable water bottle in my work bag every day, and bought my office team a set of multi-use coffee cups with lids they can take down to the coffee kiosk I have significantly reduced my impact on the waste mountain. But really it needs leadership from Government. Across the UK, progress on forcing a reduction on plastic use has been slow. Wales introduced



a charge for plastic carrier bags in 2011, and Scotland and England not until 2014. But since implementation the policy has resulted in an 85% drop in the amount of these bags entering the waste stream. Now, Scotland is set to become the first UK nation to ban plastic straws, following the announcement that the Scottish Government is also outlawing the sale and manufacture of plastic cotton buds, one of the most prevalent pieces of waste found on beaches. And although the long-awaited 25 Year Environment Plan was unveiled in January,

it unfortunately it was a series of missed opportunities, kicking the problem into the long grass when it came to the plight of plastic waste. Environment Secretary, Michael Gove, has made headlines more recently on banning plastic straws, and introducing a plastic bottle return scheme. However, this is only for a consultation which wouldn't be implemented for many years to come, if ever. A bottle deposit return scheme is needed now as 700,000 are littered every day (plus another 100,000 more at the London Marathon!). I am concerned that the lack

of ambition and concrete measures by Government is a cause for alarm in light of Britain leaving the EU. At that point the UK will no longer be subject to the same level of environmental protection, enforcement and targets. This is an issue I will continue to raise in Parliament.

Contact Ruth Cadbury:  
**Constituency Office**  
Tel:  
**0208 581 3646**  
Email:  
**ruth@ruthcadbury.org.uk**

10% DISCOUNT ON  
HEALTH ASSESSMENTS  
UNTIL 31ST MAY 2018

HEALTH  
AND WELLBEING

KEEPING  
YOU  
HEALTHY

Pr

Es

Se

Ad

Ad\*

H

HEALTH  
FIRST

HAVE YOU HAD YOUR ANNUAL  
HEALTH SCREEN?

Es

Essential

The Essential Assessment focuses on wellbeing, and gives you a heart health risk assessment and lifestyle advice from a specially trained nurse.

Se

Select

Our Select Assessment is designed to assess general health with particular reference to your cholesterol and blood sugar control while focusing on areas of particular concern to each gender.

Ad

Advanced

BMI's most popular assessment is the Advanced. It covers the major health risks for both men and women, and the assessment will cover your heart, lungs, vision, hearing; and much more.

To find out more or to book an appointment call **0800 004600**  
[www.bmihealthcare.co.uk/SyonClinic](http://www.bmihealthcare.co.uk/SyonClinic)

BMI

Syon Clinic

Serious about health.  
Passionate about care.

\*The 10% discount on BMI Health Screens is available at BMI Syon Clinic only and is limited to patients paying for their own health screens. The 10% discount is subject to availability and cannot be used in conjunction with any other offer. The discount is valid for bookings made, and appointments taken, between 1st April 2018 until 31st May 2018.

Expert  
family lawyers  
now in West  
London

We are specialist family lawyers and mediators with many years of experience at top firms. We offer proven expertise and personal service at lower cost.

burgess mee

FAMILY LAW

resolution

Real Time Family Team

in

WEST LONDON OFFICE ADDRESS  
Ground Floor, King's House  
174 Hammersmith Road, London W6 7JP  
MAIN OFFICE ADDRESS (for all correspondence)  
Unit 9, 16 Porteus Place  
London SW4 0AS  
T +44 (0)203 824 9950  
F +44 (0)208 712 6307  
[www.burgessmee.com](http://www.burgessmee.com)  
[mail@burgessmee.com](mailto:mail@burgessmee.com)

peterburgess@burgessmee.com  
D +44 (0)203 824 9952

antoniammee@burgessmee.com  
D +44 (0)203 824 9951

Friends and Family Visiting?

Local Residents Rate for your visiting friends and family at **Clayton Hotel Chiswick**.

Get 10% off the best available rate to include VAT. Valid Friday to Sunday. Complimentary Full English Breakfast, Free WiFi and use of the Fitness Gym.

Quote "Chiswick Herald" when you make your reservations.

To book please call our in house Reservations Team

+44 208 996 5200

[reservations.chiswick@claytonhotels.com](mailto:reservations.chiswick@claytonhotels.com)

[claytonhotels.com/Chiswick](http://claytonhotels.com/Chiswick)

CLAYTON  
HOTELS



# London Overtakes New York In Murders This Year



After being shot in Tottenham on Monday 2nd April, a teenage girl became London's 47th murder victim. Early reports have suggested that she was unfortunate enough to become caught in the cross-fire between two gangs. They have not, however, been confirmed. Less than an hour after the girl, named as Tanesha on social networks, a 16-year old boy was shot in East London. These two incidents appear only a day after a man was

# 11 Year Old Boy Seriously Injured In Chiswick High Road Collision



An 11-year-old boy has been left in a critical condition in hospital after being hit by a car on Chiswick High Road opposite the turning to Silver Crescent. Police and London Air Ambulance were called to the scene at around 5.40pm on 18th April after reports of a child in collision with a car. Eyewitnesses said the boy was riding a scooter at the time of the crash although this has not been confirmed by police. The boy was rushed to a major trauma centre. Police said the driver of the car involved in the crash stopped at the scene and is assisting officers with enquiries. No one has been arrested.

# MP COMPLETES LONDON MARATHON FOR CHARITY!

Local MP Ruth Cadbury ran the 2018 London Marathon on Sunday in 6 hours and 7 minutes, raising over £4000 for two charities that mean a lot to her.

"I only started running when I turned 50, nine years ago, and this is my first marathon. The training was long and hard, but on the day it was all worth it! And it's been a great opportunity to raise funds for two charities that mean a lot to me; Sun & Stars at West Mid, and Shelter. Thank you to all who have given so generously to these causes."

"West Mid hospital does a great job for children having treatment there. But the in-patient wards need brightening up urgently. Sun & Stars is a £100,000 appeal by hospital charity CW+ to transform the wards into a welcoming environment for the young patients and their parents. The project involves better play facilities, bringing entertainment & distraction to the bedside, creating a teenagers' area and finally, transforming the facilities for parents.



"Secondly; so much of my casework involves housing problems, and I have referred many people to Shelter for high quality specialist advice and support. They help people who are homeless, or facing eviction, those who have problems with their landlord

or with money issues. And they won't stop until there's a safe, secure, affordable home for everyone."

Ruth's fundraising page is <https://uk.virginmoneygiving.com/RuthCadbury>

# LOCAL LIB DEMS FIGHT TO KEEP CHISWICK POLICE STATION OPEN



As the May local elections are nearly at an end, a couple of issues have come up again and again: dirty streets, concern over downgrades to Charing Cross Hospital, possible closure of Chiswick Police station and a council that is out of touch. Gary Malcolm, current Lib Dem councillor for Southfield, has said that residents should back his party for several reasons, one of the most prominent

being the closure of Chiswick Police Station. Local Liberal Democrats set up a petition to stop Chiswick Police Station from closing. Malcolm said, "Police officers privately, and also a Bristol ex police woman, have told us that when police stations are closed, the crime rate rose." "The fear of crime also increased because of the reduced visibility of officers. The local criminals knew that

the police would take longer to respond and took advantage of this." Malcolm also drew attention to a problem that occurs when police officers approaching the end of their shifts are discouraged from making arrests due to the time taken to take prisoners to the borough station which has cells. The time taken to process the prisoner means overtime costs are expected.

## ISL London: Education Reimagined

IB Diploma College rated 'Outstanding' by Ofsted

International School of London

Diversity | Understanding | Identity | Passion

[www.islondon.org](http://www.islondon.org) | [mail@islondon.org](mailto:mail@islondon.org)  
020 8992 5823 | 15 Gunnersbury Avenue, London W5 3XD

## chiswick

16 specialist departments & a weekly general sale

Get in touch for a free no obligation valuation  
Email images of your items to [valuations@chiswickauctions.co.uk](mailto:valuations@chiswickauctions.co.uk)

# RedesignCS9 Calls Public Meeting With Election Candidates



The George IV on Chiswick High Road is hosting a public meeting on Monday, April 30 to hear what local election candidates have to say about TfL's plans for Cycle Superhighway CS9. Members of the apolitical group RedesignCS9 have hired the public function room at The George IV for a community meeting ahead of the May 3 elections. The Group has invited all local election candidates standing in the W4 wards to attend the meeting which will be

chaired by the former BBC and Classic FM presenter Sannah Simons. The two-hour meeting starts at 7pm. Admission is free. RedesignCS9 spokesperson David Lesniak said: "By deferring a decision on CS9 until after the May elections, the London Borough of Hounslow has made CS9 a critical local election issue for the residents and traders of W4." "This meeting is a chance for voters to engage in positive and constructive dialogue with the candidates seeking

election on May 3 and for them to better understand and hear what local people have to say regards plans to build a Cycle Superhighway along Chiswick High Road." RedesignCS9 is asking W4 residents and traders to confirm their attendance at the meeting in advance by email to [redesignCS9group@gmail.com](mailto:redesignCS9group@gmail.com). <http://redesigncs9.com/news/>

## The family doctor. Redefined.

GP · Paediatrician · Gynaecologist

020 8940 5009

Mon – Sat and evenings

Clinical excellence hassle-free



## Chiswick Resident Among Group Charged With Drug Offences



Six people have been charged with drug offences following a series of early morning raids on Thursday, 12 April. The following defendants have been charged with two counts of conspiracy to supply Class A drugs between July 2017 and March 2018:

[A] Andreae Williams, 28 (11.10.1989) of Long Elmes, Harrow;	[G] A 14-year-old boy (30.7.2003);	[B] Richard Matthews, 30 (3.2.1988) of Clovelly Road, Chiswick has been charged with:
[C] Ajamu Preddie, 34 (12.6.1983) of Bollo Bridge Road, Ealing;	[H] A 17-year-old boy (27.1.2001);	- 2 x Possession of a firearm with intent to endanger life;
	[I] Joanna Hill, 49 (22.1.1969) of Nevern Place, Earls Court;	- 2 x possession of prohibited ammunition;
	Williams, Preddie, and Hill have been remanded in custody at a West London police station.	- 1 x Possession with intent to supply Class A drugs;
	The 14-year-old and 17-year-old boys have been released	- 1 x Possession of criminal property.

## 94 BUS TO REDUCE IN FREQUENCY



The 94 bus, which has a route starting at Acton Green, is due to run less frequently, TfL announced. Whilst the 94 previously ran every 4-5 minutes, due to reduced demand, buses will now stop every 6 minutes. In peak hours, two additional east-bound journeys will set off, and off-peak buses will run every 7-8 minutes. On Sundays, the 94 will run every 10 minutes.

## ‘Food For Life’ Award For Chiswick Day Nursery

Chiswick Chef Soraya Court says the way to keep diners happy is to serve quality food and actively encourage feedback on menus even when your customers are under five years of age. Empty plates and children happy on a sugar and salt free diet are her reward but the Ofsted-rated ‘Outstanding’ Devonshire Day Nursery in Bennett Street, is also celebrating a prestigious ‘Food for Life Served Here’ Award because their approach to nutrition goes much further. As Emmy Avery, Manager of Devonshire Day Nursery, explains the latest award is testament to wide-ranging efforts to ensure children are not only served the best possible quality food, to support growth and development, but that they are also learning lessons about nutrition which will inform their lives. “We are very lucky to have informed parents who have fully supported us with our new menus and the children are not only thriving as a result but thoroughly enjoying their food,” she said.

That food includes Oat and Banana Balls - top of the ‘treats’ list at the day nursery, and at home - organic milk, and dishes with chickpeas, quinoa, and lentils with no trans-fats, sweeteners or additives and all sourced from suppliers committed to the highest standards of production. In congratulating Devonshire Day Nursery on their award, and praising them for their passionate approach to food, David Persaud, ‘Food For Life Served Here’ Midlands Development Manager, said: “It is no mean feat to achieve a ‘Food for Life Served Here’ award. Not only are the children receiving healthy meals made with top quality, ethically sourced ingredients, they are involved in activities which lay the foundations for them to have positive relationships with food throughout their lives.” Touring the age appropriate rooms at the day nursery in Bennett Street after the lunch-time ‘sitting’ to gather feedback on the meal of cod, rice and sweetcorn, trained Chef Soraya, who has 18 years’ experience in catering, said: “Children like change if they have a say in it. Asking them what they like or don’t like about a dish is important as less or more spice can make a huge difference. They also ‘eat with their eyes’ so simply changing the way food is presented often makes it more appealing.” Underpinning her efforts in the kitchen and in the age-appropriate play and learning rooms, staff re-inforce the importance of good nutrition to healthy lifestyles with colourful wall displays and activities designed to capture the imagination. In fact food plays a pivotal role in most activities from celebrating diversity in marking multicultural festivals with traditional foods, to creating growing pots for herbs and vegetables - where children also learn about maths and science - in the soon-to-be refurbished garden at the nursery. Preschool children, in particular, make easy baked goods, fruit and vegetable salads



and have even tackled assembling sushi at the nursery all of which contributed to a London Borough of Hounslow ‘Healthy Setting’ Award following six months of scrutiny on practice. “We are continually looking at ways to improve the quality of our provision and that includes prioritising tasty, nutritious home cooked meals and snacks. All our food can be traced along a simple supply chain, which is backed by rigorous quality assurance processes,” said Emmy Avery.

# ACTON HOMELESS CONCERN

Advice • Support • Hope



25 YEARS

Our mission is to provide advice and support for those who need shelter and help.

DONATE OR VOLUNTEER:  
actonhomelessconcern@yahoo.com  
020 8992 5768  
www.justgiving.com/actonhomelessconcern





Eat in, Take out  
Delivery

Sun-Thurs 11am to 9pm  
Fri-Sat 11am to 10pm



NOW OPEN IN CHISWICK

Yuma Sushi's highly qualified chefs are producing delicious, handmade sushi using the best quality ingredients

Shop1, Chiswick Park Station  
Acton Lane, Chiswick W4 5NE  
t: 020 8995 7494 w: yumasushi.co.uk





30 Years Funding

High quality care and education for children aged 3 months to 5 years



Spaces now available

Active Learning Chiswick is open Monday to Friday 7.30am - 5.30pm, 50 weeks of the year. Our nursery offers regular sessions with our music specialist, art specialist, sports coach and we have our own dedicated nursery teacher. We are conveniently located for commuting parents with a close proximity to Chiswick train station, 100 bus stop and E1 bus stop.

020 3824 7085  
brighthorizons.co.uk  
parentenquiry@brighthorizons.com  
Quentin Hogg Memorial Ground, Harrington Rd, Chiswick, London W4 3AN

\*For more information please visit: brighthorizons.co.uk/30years

# THE GUNNERSBURY

chiswick

This historical Inn & coach house has been serving food to travelling tourists since 1830, a good example of a warm and welcoming Victorian building.



We have an honestly priced, well balanced menu with something for everyone. We are open from breakfast time to dinner time. 8.30am - 9.30pm. Please see our website for full menu details. Kids choices too.

We are “the talk of the town” for our Traditional British Sunday Lunches.

THE GUNNERSBURY  
590 Chiswick High Road W4 5EP  
info@thegunnersbury.com | www.thegunnersbury.com  
Reservations: 0208 742 7466

**10% OFF ALL MAIN COURSES INCLUDING PIZZA WITH THIS AD**



# Barclays first UK bank to ring-fence

Dr P Singh explains Barclays bank’s restructuring.

The reckless behaviour of many banks that culminated in the financial crisis of 2008 devastated many individual and corporate customers financially. It also toppled many banks, leading to their multi-billion pound tax-payer bailouts.

As a consequence, the government sought to protect consumers by making banks able to withstand similar future financial shocks. The protection chosen was to legally ring-fence large banks’ UK day-to-day operating divisions from their international or more complex divisions.

For Barclays, the separation means a separate legally incorporated ring-fenced bank has been set up called Barclays Bank UK PLC. Barclays will however continue to have one chief executive, one share price, and one brand.

Technically, on 9 March 2018, Barclays received approval from the Prudential Regulation Authority and the High Court of England and Wales

to complete the restructure using a legal process called a Ring-Fencing Transfer Scheme under Part VII of the Financial Services and Markets Act 2000. The Scheme became effective on 1 April 2018 and the restructure was implemented on that date.

All Business Banking customers of Barclays Bank PLC have been transferred to Barclays Bank UK PLC.

All other business customers of the Barclays Group will continue to be served by their existing entity.

To comply with ring-fencing legislation, the sort codes of some 800-900 thousand customers had to be changed over the period of July 2017 to January 2018. This was to ensure customers’ accounts could be held in the ring-fenced bank.

For customers who are affected, their account numbers will remain the same and any payments will continue to reach accounts for a period of three years. This is to give

customers plenty of time to update people paying money into their account, with the details of their new sort code.

Barclays completed its ring-fencing well ahead of the January 2019 legislative completion date, but, according to the Financial Times, at a cost of almost £1 billion and three years of preparation.

For more information on Barclays’ ring-fencing, go to <https://www.home.barclays/about-barclays/ring-fencing-explained.html>

The billions that Barclays, RBS and HSBC will each spend are just one more type of multi-billion pound payout by them for their recklessness.

Its needs to be added however, that regulators and legislators must bear some of the responsibility for those costs, because they were complicit in creating a financial system that grew to become a house of cards.

## Barclays Bank UK PLC composition

Barclaycard Personal UK	All personal credit card and contactless product customers of Barclays Bank PLC whose accounts are held in the UK.
Business Banking	All Business Banking customers of Barclays Bank PLC (with some exceptions).
Personal and Premier Banking	All retail and Premier Banking customers of Barclays Bank PLC whose accounts are held in the UK and almost all mortgage customers of Barclays Bank PLC.
Wealth & Investments	Wealth Management, Private Clients and Smart Investor clients with accounts in the UK.

## Barclays Bank PLC composition

Products and services designed for Barclays’ larger corporate, wholesale and international banking clients will continue to be offered by Barclays Bank PLC and its subsidiaries.

Barclaycard Business UK and Barclaycard Personal non-UK	All Barclaycard Germany and Barclaycard US customers, corporate credit card and payment processing customers and clients (including clients of The Logic Group, all business clients with a Barclaycard Commercial credit/charge card and any customer with a Barclaycard Payment Solution product), and all customers or clients of Barclays Partner Finance.
Corporate Banking	All Corporate Banking clients of Barclays Bank PLC, including those whose accounts are held outside of the UK, and all Corporate Banking clients of any other entity in the Barclays Group (such as Barclays Bank Ireland PLC).
Investment Bank	All Investment Bank clients and counterparties.
Private Bank & Overseas Services	Private Bank and International Banking clients, including the Crown Dependencies

## Gambling industry and government under pressure to protect addictive gamblers

Dr P Singh explains the problem.

The BBC has reported on several occasions on the serious problem of addictive gambling in the UK and the government’s recent attempt to control it.

Matt, a trainee accountant from London, started gambling as soon as he turned 18. He says he lost as much as £30,000...I couldn’t watch a game of football without having a bet on it.

“It was embarrassing to open up [to friends] and say, ‘I’m really struggling with this gambling problem.’ They were involved in gambling as well,” he said.

Research by the Victoria Derbyshire Show found that one in five of commercials in UK football matches broadcast across 25 matches were for betting firms, rising to more than one in three in some games.

A study in 2017 by Goldsmiths University found more than 250 separate gaming adverts on screen during the BBC’s Match of the Day programme.

These were mostly on shirts, hoardings and post-match interviews.

“The reality is, gambling is normalised in this society and if you look at why, it was probably the introduction of the National Lottery, it changed the perception,” said Clive Hawkswood, chief executive of the trade body, Remote Gambling Association.

In 2017, Australia and Belgium banned all gambling adverts in live sport before a certain time of the day. The UK Labour government in 2007 relaxed the rules around gambling advertising, letting high street and online betting firms show TV commercials for the first time.

People who feel they are having trouble controlling their gambling can ask betting firms to refuse their service. More than 1 million requests were made by gamblers to online operators asking to close accounts and help them stop gambling in 2016-17, compared with 618,000 the year

before.

From spring 2018, online gamblers who want to stop will be able to “self-exclude” by registering with a single website called Gamstop. The move is intended to help people who may have opted out of gambling with one operator to stop gambling with the others.

All operators will be required to offer the scheme. For information about Gamstop, go to <http://www.gamblingcommission.gov.uk>

Sky Bet was fined £1 million for failing to do more to protect its vulnerable customers from gambling. Richard Watson, Gambling Commission programme director, said: “This was a serious failure affecting thousands of potentially vulnerable customers and the £1m penalty package should serve as a warning to all gambling businesses.”

“Sky Bet reported the issues to us quickly, co-operated with us and has taken this investigation seriously.”

Need business cash?

✓ Have you supplied a business service?

✓ Can't wait for your invoice to be paid?

If you ticked both boxes, then contact Cash for Invoices Limited and sell your invoice for immediate cash.

No security or guarantee required

For a free no-obligation quote contact [sales@cashforinvoices.co.uk](mailto:sales@cashforinvoices.co.uk)

Tel: 07800 862 499

Customer must confirm validity of each invoice sold [www.cashforinvoices.co.uk](http://www.cashforinvoices.co.uk)

Cash for Invoices Limited

Chiswick Herald Friday 27th April 2018chiswickherald.co.uk

## Murder and crime wave in London – Zero tolerance

Dear Sir

The ongoing murders and the awful crime surge is absolutely disgraceful, all happening under the watch of London Mayor Sadiq Khan who seems to be preoccupied with Brexit. I have heard nothing from him reacting to the crime wave.

Here is my solution:

- Legalise all drugs
- Get found carrying a gun: Guilty of Conspiracy/Intent to murder
- Get found carrying a knife: Guilty of Conspiracy/Intent to murder
- Moped assisted crime: 10 years minimum
- No ‘three and you’re out’ – absolute ZERO tolerance.

Kind regards

JOHN SIMPSON

# Exit from Brexit

Dear Chiswick Herald,

We are now an entire year on since the government invoked Article 50 without any plans for what to actually do next, with only a year left to go before the UK potentially crashes out of the EU, and yet the government still doesn’t have a plan and the Brexit negotiations are going worse than ever. The Conservatives are still being held hostage by their minority of Eurosceptic MPs who remain intent on implementing their own extreme interpretation of the referendum result and pursuing a damaging Brexit. Labour is not providing any real or effective opposition and is also continuing to pursue policies which will lead to an almost equally damaging Brexit.

Neither of the two main parties has any realistic or deliverable plan for a future relationship with the EU which will benefit the UK, neither has made any proposal for a solution to the problems of the border in Northern Ireland, and neither of them is willing to guarantee the rights of EU citizens living in the UK, nor to fight for the rights of UK citizens living in the EU.

Chiswick Liberal Democrats continue to campaign for an Exit from Brexit. They invite everybody interested in the fight against Brexit and to retain our rights to join us for an intimate and interactive event to get the latest behind the scenes insight about Brexit and EU citizens rights. We will discuss the latest developments in the Houses of Commons and Lords, and the actions we can all take to achieve an #ExitfromBrexit.

Yours Sincerely,  
CHISWICK LIB DEMS

Exit from Brexit to be held on Monday 26th March in the Boston Room, George IV pub, Chiswick High Road from 7.30 pm to 9.00pm. Register for your free ticket to the event at [brakeonbrexit.eventbrite.co.uk](http://brakeonbrexit.eventbrite.co.uk)

Send your letters to [newsdesk@chiswickherald.co.uk](mailto:newsdesk@chiswickherald.co.uk) or post to The Chiswick Herald, Unit 22 295 Chiswick High Road, London W4 4HH

## PLASTIC IN OUR OCEANS

Thanks to some great journalism and film-making, London and the world are waking up to the threat posed to the planet - and our own health - by plastic waste.

However, when we see images of mountains of plastic washed up on beaches thousands of miles away, or fish poisoned by micro-beads that have turned parts of the ocean into plastic soups, it may be tempting to think that the problem is just too big to tackle, or too far away.

The truth is that our actions as individuals will make a difference in tackling a global problem. We can start cleaning up the planet by starting in our own communities.

I was very impressed by the story of five-year-old Aya James who persuaded Pizza Express to ban plastic straws after writing to them saying they will make animals “sick”. It shows how we can all make a difference.

So I reckon that as Londoners, the best way we can look after the world’s oceans is to start with our own lifestyles, our own waste and our own waterways.

If we can tackle plastic waste in the River Thames, as individuals or as communities or by supporting campaigns such as The Cleaner Thames campaign, perhaps the oceans will stand a chance too.

SYED KAMALL, CONSERVATIVE MEP FOR LONDON.  
10 Greycourt Place, London SW1P 1SB

## CS9 – Just make it narrower

As an avid cyclist, I’m all for cycle lanes and endorse cycling as a preferred mode of transport in and around Chiswick. However, having seen the plans for CS9 it does look ridiculously wide. It would be easier to make a more defined lane making use of the existing ones, and add new ones based on those?

SAMANTHA,  
Chiswick W4

## Wanted – Old photos of Chiswick High Road

Dear Chiswick Herald readers,

I am looking for old photographs of Chiswick High Road from around 1960-1970. If you can help, please email [rob@vi-estramagazine.com](mailto:rob@vi-estramagazine.com)

Many thanks,  
ROBERT T.

Chiswick/Brentford  
020 8847 0077  
[space-station.co.uk](http://space-station.co.uk)

## Secure storage units in Chiswick & Brentford with free removals

- Free removals into your storage unit
- Secure, individually alarmed units with PIN-coded access
- Humidity control providing optimum storage conditions
- Convenient crate hire service

Packing boxes and bubble wrap stocked in store

Looking after your valuables since 1983

Call us on 020 8847 0077 for a personalised quote or visit: [space-station.co.uk](http://space-station.co.uk)

## Ski Injury?

New Victoria Hospital's Sports Injury Clinics provide the expert advice and treatment you need to get back in action.

Our highly experienced team of orthopaedic surgeons, radiologists and physiotherapists can help to provide you with a full and fast recovery.

- Highly skilled professionals
- New state of the art operating theatres
- The latest imaging equipment
- No waiting times and fast results
- Recognised by all major insurers
- Fixed price surgery & finance packages

A private, charity owned hospital providing compassionate healthcare for 60 years

Call: +44 (0) 20 8949 9020  
Email: [enquiries@newvictoria.co.uk](mailto:enquiries@newvictoria.co.uk)  
Visit: [www.newvictoria.co.uk](http://www.newvictoria.co.uk)  
Find us: Just off the A3  
184 Coombe Lane West  
Kingston KT2 7EG

NEW VICTORIA HOSPITAL  
Exceptional care for your health





Rev Martine Osborne  
St Michael's Church ,  
Elmwood Road, Chiswick.

The other day someone offered me a free filing cabinet for my office and I was proud to reply that I don't do paper. All my files are stored in clouds and this means I have a (relatively!) clutter free study and keep paper waste to a minimum. Reading recently, however, the ancient text of Genesis – the first book of the Bible - I've been thinking about how agreements and occasions were marked in those times – before clouds and before paper. Today we have contracts and books and photos – whether sitting on our shelves or in some kind of digital heaven. But what did people do in ancient times? How did they mark and 'document' agreements and special occasions? Well, here are three answers to that question – which make me wonder whether these ancient practices don't have much to offer as alternatives to how we do things today.

**1. Cairns**  
In ancient times, making a pile of stones – or a cairn - was a popular way of marking not just a special location but a special event or agreement. Or even a reconciliation or a 'going of separate ways' or both. There's a wonderful story in Genesis about Jacob and his father-in-law Laban. They have a difficult relationship, which culminates in hostility when Jacob leaves his father-in-law's home in the middle of the night with everything that belongs to him and without saying goodbye. Laban chases after Jacob the following day and the two men are reconciled but agree to go their separate ways. To mark this agreement they set up a large pile of stones called a Mizpah, which is Hebrew for watchtower. They can't call their lawyers and get

# 3 alternatives to clouds



them to draw up a contract. So they do this by building a pile of stones to testify to what they've agreed. And to act as a watchtower – which is a reference to God being the one who is the witness to their agreement and who watches over how they honour that agreement in the future. I think it would be wonderful to have more of these mizpahs or watchtowers in our own lives. My son got married last year. And he and his wife have a certificate, rings and some lovely photos to evidence this. But what if they set up a cairn or a watchtower in their garden as a very permanent and present reminder of the covenant they have entered into together – how special would that be?

**2. Totem poles and tapestries**  
Similar to watchtowers, totem poles and tapestries have been used to symbolise and commemorate important events, narratives and family trees. We do still erect statues and plaques. But I wonder whether we could do more to document our history creatively. I think it's wonderful how bits of the Berlin wall have been allowed to stand, such as at Gedenkstatte, and have been used by artist to tell the story of the wall. Many of us think about

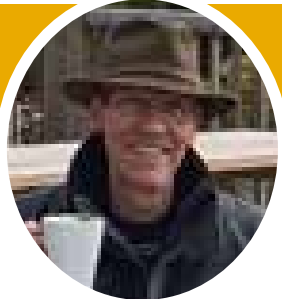
writing our memoirs – at a certain time in life. But what if, instead, we constructed a totem pole or produced a tapestry of our family tree or story – how amazing and enduring would that be?

**3. Blessings and symbols**  
Although this is not a permanent physical thing, I notice in ancient texts how much people used physical gestures to mark important occasions. Towards the end of their lives, people take care to pass on blessings to their families. They can't have a will drawn up and put in the bottom drawer of their desk. So they ask children and grandchildren to come and sit before them and they lay hands on them and bless them. And they often use symbols to convey those blessings. For example, Jacob calls one of his sons, Judah, the lion and this symbol is passed down from generation to generation – right through to Jesus, who is descended from Judah and called the Lion of Judah. I suppose this is something we see in heraldic shields – but again a practice that seems to be disappearing. In Genesis, if a family member is being entrusted with some special responsibility he or she is asked to put his or her hand under the mother or father's thigh as a symbol of the importance of the

promise. We do, of course, still hold hands with our loved ones as they die and we do whisper blessings between us. But what if, in later life, we had the courage to have ceremonies of blessing as the ancients did? It's only human that we don't want to vanish without trace at the end of our lives, that we want to document our memories. But paper and clouds have made us quite lazy about how we do this. And neither of these media is as permanent as we might hope. So let's me more creative in marking what is important, what has been important, in our lives. Think of setting up some form of cairn, watchtower, totem pole, tapestry or blessing. And, as Laban said to Jacob four thousand years ago, 'May the Lord watch between you and me, when we are absent one from the other.' May the Lord watch over all that is precious to your heart.

Usual Sunday services at St Michael's Elmwood Road are at 9.30am and 11am – with groups and activities for children. St Michael's Church: [www.stmichael-elmwoodroad.org](http://www.stmichael-elmwoodroad.org) Subscribe to Martine Osborne's blog here: [www.martineoborne.com](http://www.martineoborne.com)

## Chiswick Poet



### The Hippo

*Rumpled skin  
and goofy face.  
Plodding creature,  
lacking grace.*

*Throwback to  
a dinosaur,  
you clearly know  
what mud is for.*

*But what you lack  
in grace and style  
with your funny looks  
you still beguile.*

*No doubt to us  
you looks a mess,  
but your partner,  
surely, you impress.*

*For if this fact  
were not the case,  
no baby hippos  
would take place.*

*We must not judge  
you by your face.  
To do you down  
is such disgrace.*

*For you are part  
of God's great plans.  
And in your world  
you've many fans!*

© Tony Inwood.

*Tony has just created an exciting new website called newtube, which is a great way to read poetry on the move. It is a collection of his diverse poetry in an easily accessible form, which can be read on a journey, in a doctor's waiting room or in any of those idle moments that we all seem to encounter daily. This mobile-friendly website will offer entertainment in a stimulating and humorous way, wherever you are!*

[www.new-tube.org](http://www.new-tube.org)

# On the couch with Nicholas Rose

## Keep your children safe and well in their use of the internet



My previous editorials have focussed on safety and how to speak to your children if you are concerned about how they keep themselves safe but also if you have any concerns because of they way you see them using the internet.

Today I thought it would be useful to consider appropriate use of the internet to contribute to the wellbeing of your children.

In June this year new studies provided evidence that moderate use of the internet and social media does actually benefit children and young people. Suggesting that use of social media helps build resilience and develop social skills thus having a positive impact on mental wellbeing. So it looks as though the usual thinking about moderation in all things does also apply to the new digital age too.

More than a third of 15 year olds in the UK are understood to be classed as “extreme internet users” sending over six hours a day online and 95 percent are using social media. Extreme users are more likely to report being bullied online and research by the NSPCC identified that 80 percent of children felt unsafe using social media to some degree.

In all cases research suggests that parents need to be supported in helping children use the internet appropriately but there appears to be very little guidance out there on how to do that. Most focus is still on safety rather than wellbeing. Current thinking concludes it is unlikely that one size will fit all and that the appropriate use of the internet will depend upon a range of factors. You might like to think about your



child's age, interests, social networks and particular needs. If your child could do with help in particular areas then the internet will be able to offer advice, support and even tools. It is most likely that the most effective approach is to actively talk to your children about how they use the internet and look for how it

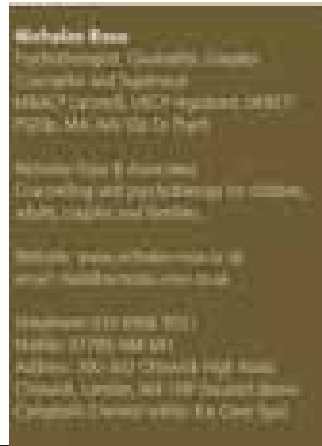
can support them. Focussing purely on time spent online is going to be too limited.

To understand the uses that lead your child to experience positive outcomes and affirmation to their self esteem and seek to strengthen and support this use is likely to be more effective than focussing on usage where it either appears to be causing distress or at best appears to have little benefit.

Rather than any single solution, it appears that children benefit most when parents use a combination of approaches including modelling positive behaviour, using a collaborative approach to setting limits on usage, keeping up to date on developments and technologies around security and online safety and showing curiosity and a willingness to support positive behaviours. Technology can be something that parents can think they

are ill equipped to deal with, especially when children can be more up to date and often more proficient in handling technology.

However what parents do have more knowledge about is the importance of balance - you can therefore support your child in the same way as you would for any other issue - food, friendship, health. You don't have to know about the technology - just about how best to find a healthy balance.





## Nicholas Rose & Associates

Tackling life's struggles through understanding and empowerment.

### Chiswick based Counselling Psychotherapy & Psychology Service for individuals, Couples, Children, Adolescents and Families

We offer a private and friendly service from our team of highly experienced, registered and qualified clinicians.

*"The sessions offer a secure, supportive and open environment. The pace of the conversation and unbiased facilitation helps resolve issues...."*

As a team we have broad ranging expertise working with concerns including, stress, anxiety, depression, relationship problems, infertility, post-natal depression, bereavement, anger and addictive or compulsive behaviours. Our expertise also covers working with children and adolescents.

**Available Monday to Fridays from 8am to 9pm,  
Saturdays and Sundays from 9am to 6pm.  
Same day appointments available**

Call Nicholas on 020 8996 9551  
e: [info@nicholas-rose.co.uk](mailto:info@nicholas-rose.co.uk) w: [nicholas-rose.co.uk](http://nicholas-rose.co.uk)

Free TV and Fridge-Freezer with every summer house purchased

## SUMMER HOUSE KING

EXTENSIONS & LOFTS Summer houses start at £17,000



summer house 3x5 mtrs £29,000



extension with 5 metre bifold doors



extension from £1500 per square mtr



summer house 5x6 mtrs £39,000

- Metal bifold doors
- Cedar clad
- Fully insulated
- Inside lights sockets
- Outside lights
- Decking lights

All enquiries m 07732723927 / 07484185584  
email [terry@summerhouseking.com](mailto:terry@summerhouseking.com) [www.summerhouseking.com](http://www.summerhouseking.com)



# Experience Queensland's Indigenous Culture

by Alex Holman

From the beaches and wetlands of South East Queensland to the ancient rainforests of Tropical North Queensland, all the way up to the palm-fringed islands of the Torres Strait, the Sunshine State is brimming with awe-inspiring and immersive experiences that bring the ancient ways of Australia's Aboriginal and Torres Strait Islander peoples to life. For those inspired by the opening ceremony, below are just some of the newest and best indigenous experiences that can be found in the destination.

Spirits of the Red Sand, Beenleigh, Opened March 2018

Ever wondered what life was like in a 19th century Australian village, a time when British settlers forever changed the aboriginal people's way of life? The new Spirits of the Red Sand experience in Beenleigh is a 2.5-hour journey through the 1800s, led by Jarrah, the only survivor of three Aboriginal brothers, and based on the true story of his family. This interactive experience with indigenous culture takes up to 120 guests through seven sets of live theatre, like the Dreamtime, a precolonial village and a jail, with an 18-strong

cast of direct descendants of the first people. The cast will join guests for a warm dinner in the dining hall when the show concludes. Located in the Beenleigh Historical Village, 45km from the Gold Coast CBD and 36km from Brisbane's CBD, tickets include transfers from either location, and start from \$25 to \$65 for kids and \$120 for adults. [www.spiritsredsand.com](http://www.spiritsredsand.com)

**Spear Fishing with the Walker Brothers**

Described as a bushwalk with a difference, guests are invited to listen to the close-knit women of the Walker Family as they discuss the history of the land and cultural significance of the area through the eyes of those who have lived there for tens of thousands of years, before taking a trip to the magnificent Bloomfields Falls. For a slightly more hands on indigenous experience join one of the Kubirri Warra brothers on their beach, mudflat and mangrove walk where Linc and Brandon Walker follow the traditions of their ancestors who, for thousands of years, educated visitors about their Kuku Yalanji culture. Once at Cooya Beach

the brothers teach their guests how to throw a spear, hunt whilst stalking and observing wildlife and country, and how to track coastal resources Coastal Beach Walks. <http://www.kycht.com.au/>

**Mossman Gorge Centre and Dreamtime Gorge Walk**

Located in the southern part of the World Heritage Listed Daintree Rainforest. Mossman Gorge is one of the few places in the country that visitors can gain an insight into the lives, culture and beliefs of Australia's Indigenous population, and their connection to the natural environment. Embark on one of their Ngadiku Dreamtime Walks, conducted by the local Indigenous people. The walks includes a traditional smoking ceremony, stories of the Kuku Yalanji culture and traditions, exclusive access to Kuku Yalanji land and bush tea and damper. Visitors can learn the art of making paint, and how different plants and trees can be prepared and eaten as bush-tucker, as well as stopping off at culturally significant sites and old bark shelters. [www.mossmangorge.com](http://www.mossmangorge.com)



**Daintree Eco Lodge & Spa**

Retreat to Tropical North Queensland and check into the Daintree Eco Lodge and Spa where you can immerse yourself in the sacredness of Wawu-Karrba (special place for healing the spirit). It offers pure escapism and enables you to disconnect from

the world and reconnect with your mind, body and spirit. And, when you're not being pampered, explore the ancient rainforest with an Aboriginal guided walk or dine at Julaymba Restaurant and treat yourself to delicious cuisine with a native twist. [www.daintree-ecolodge.com.au](http://www.daintree-ecolodge.com.au)

**Walkabout Cultural Ad-**

**ventures**

Walkabout Cultural Adventures offers full- and half-day tours that visit culturally significant sights between Port Douglas and Bloomfield. Spend time with the Kuku Yalanji Aboriginal people and learn about their history, and relationship with nature and its healing powers. You'll

see natural wonders including waterfalls, river systems and coastal habitats. Your guide will teach you about the different food resources and medicines that you can make from nature and the rainforest. After a big day of walking, take a dip in the refreshing waters of the Daintree river. [www.walkaboutadventures.com.au](http://www.walkaboutadventures.com.au)

**Ingan Tours**

Halfway between Cairns and Townsville lies the Davidson Valley, home to Jabanbarra Jirrbal people and Ingan Tours. Here tours through the heavy growth rainforest lead to the crystal clear Echo Creek where a local guide recounts how Yunba the Black Water Python healed his sick and wounded ancestors. Alternately, the Ingan River Walk takes you through knee high water and shows the art of basket weaving. If you are visiting nearby Mission Beach or Paronella Park, then this is the tour for you. <https://www.ingan.com.au>

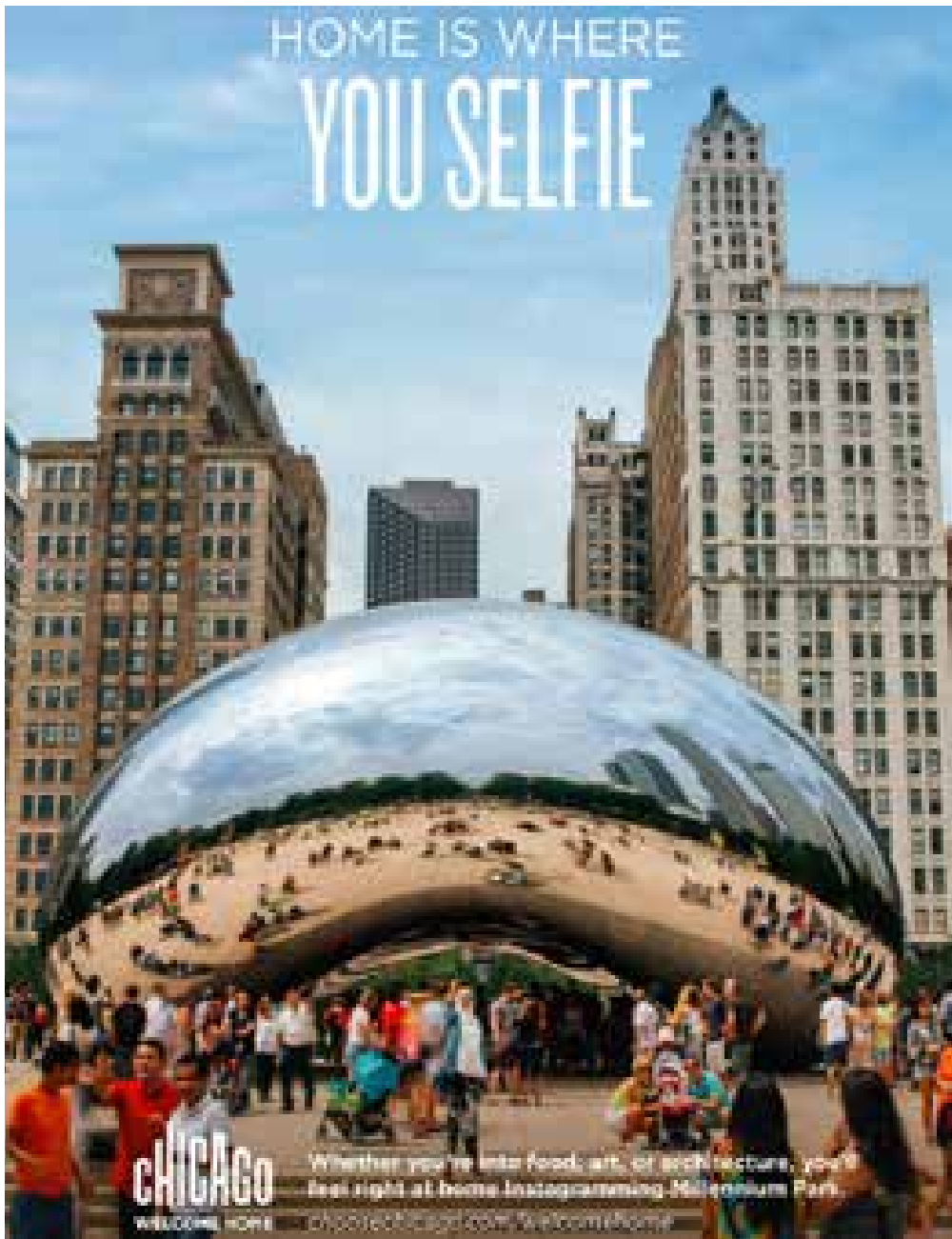
**Tjapukai Aboriginal Cultural Park**

Perfect your boomerang throwing skills at the Tjapukai Aboriginal Cultural Park in Cairns and be rewarded with a colourful live performance by the Tjapukai Dance Troupe. Or, forage for bush tucker by day and participate in an interactive fire ceremony by night. Either way, this park is completely hands-

on and you're invited to join the hosts as they practice their Indigenous culture. From primitive fire-making to learning specialist hunting techniques, this is a remarkable experience where you'll also learn vital survival tools. [www.tjapukai.com.au](http://www.tjapukai.com.au)

**Cairns Indigenous Art Fair**

Hosted in Tropical North Queensland, the Cairns Indigenous Art Fair is well attended by art enthusiasts, film buffs and fashion designers alike. The highlight of the event is the runway fashion show where local Indigenous designers showcase their creations. During the day you'll be entertained by dancing, singing and art gallery showings and at night you can participate in further celebrations and food stalls. The event has a major focus on cultural education in its program. It hosts training workshops for children to learn more about the history of the art and furthers their understanding of the role artists play in current culture. <https://ciaf.com.au>





# ST BENEDICT’S CRICKETERS TOUR SRI LANKA

St Benedict’s U14 and U15 cricket teams embarked on an exciting tour to Sri Lanka in April. As well as some great cricket played against outstanding teams, the itinerary included unforgettable excursions and an introduction to Sri Lankan culture. The tour consisted of seven fixtures against Sri Lankan school teams. The most memorable of these was played at the magnificent Galle International Stadium. Fringed on two sides by the Indian Ocean, it is considered to be one of the most picturesque cricket grounds in the world! The tour included several fascinating excursions, taking in tea plantations, an elephant sanctuary and a visit to the Temple of the Tooth in Kandy - one of the most important Buddhist sites in Sri Lanka. In contrast, there was also a city tour of Colombo and a Sri Lankan Culture Show, which reached its climax with fire walking! The boys stayed in three different locations - Kandy, Hikkadua and Mount Lavinia, near Colombo. A highlight of the tour was an inspiring afternoon at the Foundation of Goodness in Seenigama near Hikkaduwa. The charity, which is sup-

ported by the MCC, has transformed the lives of rural communities in Sri Lanka since the Tsunsmi of 2004, through providing education and sporting opportunities. After touring the Foundation, and finding out about its work, the boys played football and cricket with a group of happy, talented and very enthusiastic children. St Benedict’s presented the charity with a cheque for £7,000, raised this year by pupils throughout the school. The presentation was made at the Cricket Café in Colombo, and was attended by Rangana Herath, the most successful left-arm bowler in the history of test cricket and great supported of the Foundation.

St Benedict’s Senior Master, Dicky Thomas, said: “This brilliant tour provided wonderful experiences, and featured three great wins in challenging and unfamiliar conditions. Congratulations to all the boys who took part!”



## Going Out? Choose The Pharmacy On Devonshire Road

Evans & Peel, London’s original Detective Agency themed cocktail bar, have been scouring the UK for the best ingredients to deliver exciting dishes to serve to the folk of West London, transforming from, not just an expert cocktail bar but also into a destination restaurant. They have two sites, the Pharmacy in Chiswick and Detective Agency in Chelsea, both will be launching a new Smokehouse menu on 27th March – 3rd April during their soft launch period. The Smokehouse menu will consist of regional BBQ dishes from Carolina style pulled pork, via St Louis with cut pork spare ribs, all the way to Texas style brisket, and Pulled

eggplant and mushroom brisketall served with pickles, buttermilk potatoes, BBQ beans and slaw, as well as house sauces. All meat will be dry rubbed with their own tailored spice blends and smoked slowly over oak for up to 17 hours making them succulent and tender. Both venues will also serve a bar menu featuring small plates of Buffalo wings, Mac ‘n’ Cheese with pulled pork or smoked mushrooms, Padron peppers and Root beer BBQ beans with pork brisket. Both venues serve an eclectic list of intricate, seasonal cocktails focusing on variations of classics. The Detective Agency serve the ‘Not Your Average Joe Martini’, an adaption of the Espresso Martini using Buffalo Trace Bourbon, Coffee Liqueur, Tonka Bean, Benedictine and Cold Brew Coffee. Both cocktail bars specialise in spirit infusions

such as basil infused vodka and saffron liqueur adding another level to their cocktails on offer. The Pharmacy ‘prescribe’ botanical and herbal cocktails to their guests such as ‘Marabout Healing’ using Brokers gin washed with toasted sesame oil, Cynar and homemade date syrup. Guests will be fully immersed into 1920’s American prohibition with quirky props and original vintage furniturealongside low lighting offering inviting guests into the unknown world of Evans & Peel.

**Evans & Peel Pharmacy Cocktail Bar**

**42 Devonshire Rd, Chiswick W4**

**Bookings: 020 8994 4947**



# TURNER’S HOUSE IN TWICKENHAM – A 3D MASTERPIECE



You may have seen the eponymous award-winning film on his life, or visited his very own wing at Tate Britain. Perhaps you were one of the many who voted for his painting The Fighting Temeraire when it was awarded the nation’s favourite painting? But did you know the great landscape artist JMW Turner lived nearby in a house that he designed himself? In his teens Turner had some training as an architectural draughtsman, and claimed

that if he could have his time again he would have rather been an architect than a painter. After a humble start as a barber’s son from Covent Garden, he became an admired and increasingly wealthy artist, when in 1807 he bought two patches of land in Twickenham. Then it was a quiet, rural, riverside retreat favoured by authors, artists and aristocracy. After years of drafting ideas in the sketchbooks he always carried with him, in 1813 he



finally built a sanctuary for himself and his father, “Old William”. This was a place only his close friends would visit for picnics and fishing trips on the Thames, a favoured subject for his paintings. Turner sold the property in 1826, since when the house has been a private home, a laundry and, in the Second World War, a shadow factory making pilots’ goggles, during which time the heavy machinery almost shook the house to pieces. Turner’s House had been on English Heritage’s Buildings at Risk register, but since Turner’s House Trust took ownership in 2010 they have been raising funds to restore the house and

return it to Turner’s original design. This required more courage and commitment than they had envisaged, as what started off as a relatively straight forward repair job turned into a major restructuring and renovation project once they realised what was needed to reinstate the artist’s vision. The Trust bravely bucked the current trend to extend in the London building market by reducing the house in size and return it to Turner’s lighter structure featuring wings of just one storey instead of two. However, once demolition work had started, they also discovered

the house which had,in living memory,always been white had not been so in Turner’s day. The exterior needed to be totally stripped of its rendered stucco work to reveal the original, beautiful brick-work beneath. Expert heritage craftspeople were brought in to carefully restore and reconstruct Turner’s more elaborate flourishes inside - like faux marbling in the hallway and the coloured glass above the staircase.And a small, dirty scrap of wallpaper in a floral and pinpoint design was cleverly recreated to decorate the bedroom. The curatorial style is simple to retain a homely atmos-

phere with creative touches to help transport people back in time; the long case clock in the dining room uses digital technology to provide a soundscape of chatter among the friends known to visit Turner; a telescope recreates the view that Turner would have seen from his bedroom window, and the shadow of “Old William” springs to life and smokes a pipe in the kitchen. “We are delighted that Turner’s country villa has opened to the public, beautifully restored,” said Alex Farquharson, Director Tate Britain. “Designed by Turner himself, it is his largest work of art. It will provide a fascinating insight into his life, throwing light on his character, family and friends.” Turner’s House is open to visitors Wednesday-Sunday. Self-guidedvisits 10–1pm and guided tours 1–4pm. Adult £6, child 5–15years £3, under 5s free. Family ticket (2 adults and 2 children £15).Book online at <http://turnershouse.org/visit-us/>

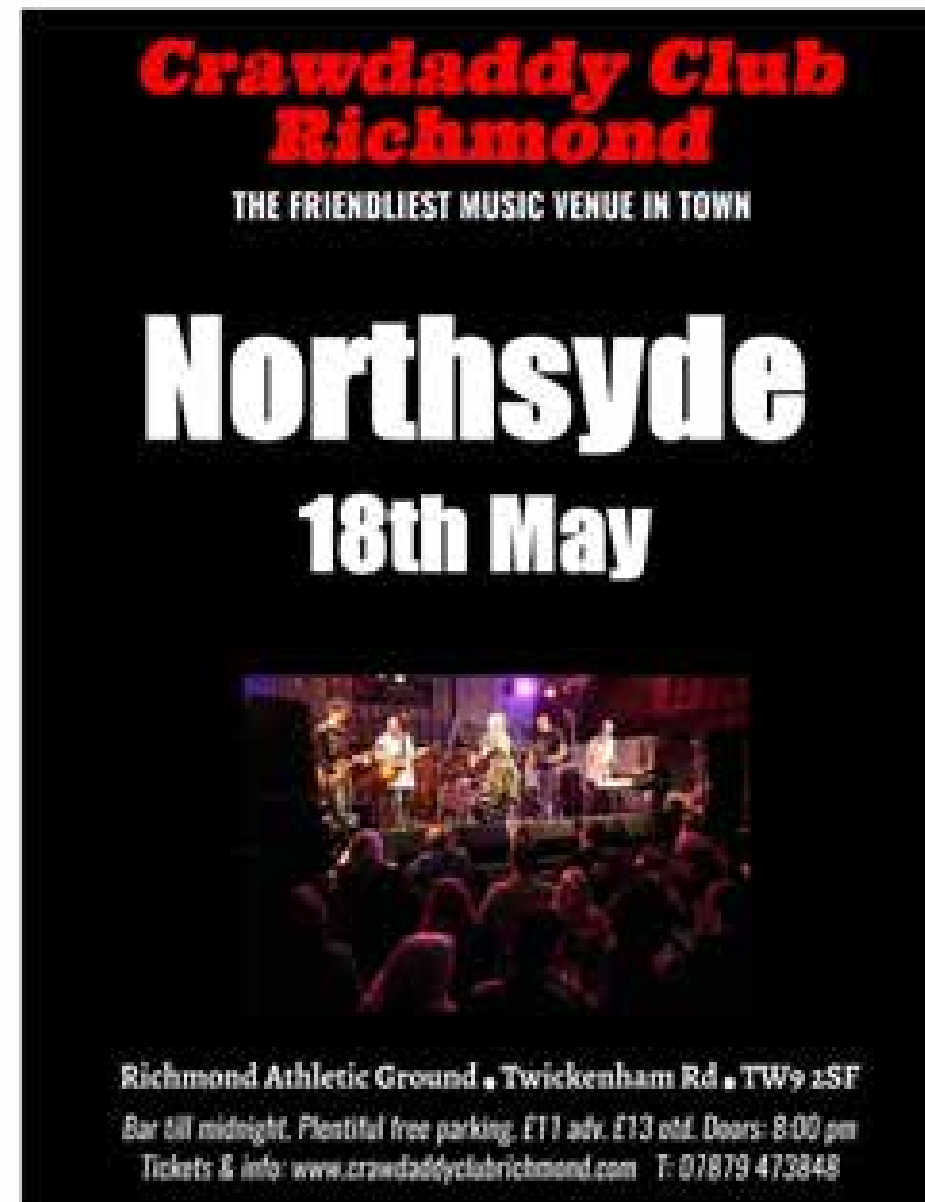
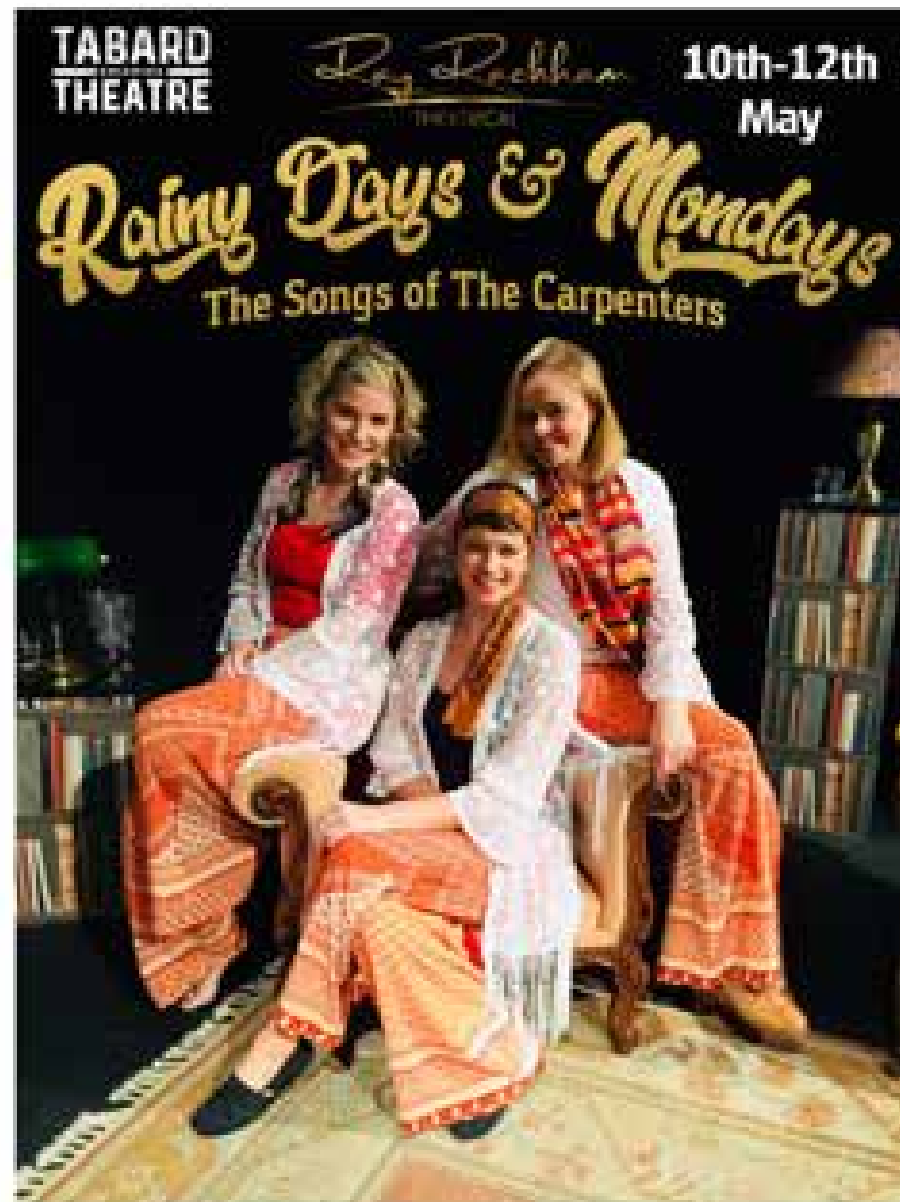
## CHISWICK PIER TRUST SUMMER EVENTS CALENDAR IS HERE!

Starting on May 5th, the Chiswick Pier Trust are putting on a host of events for locals to enjoy. May 5th: Walk Tall Workshop - Chiswick Pier Trust is teaming up with Alexander Technique teacher Elizabeth Dodgson to put you through your paces, showing you the Alexander Technique method to improve your posture and gait to walk with more freedom and ease. You’ll then be taken on a walk with Elizabeth over Barnes Bridge and around the Leg O Mutton nature reserve to practice what you’ve learned, when she can answer any questions. Refreshments will be served back at the Pier House. 22 June: The Midsummer Jazz Cruise - Celebrate the summer solstice with Chiswick Pier Trust’s popular Midsummer jazz cruise to Westminster. Passengers will have a delicious two course supper served on board, with drinks available from the bar, while being serenaded by jazz band,

Anacousis. Departing from Chiswick pier at 7 pm returning after dark, it’s a mellow and memorable evening. 1 July: Party on the Pier - Save July 1st for Chiswick Pier Trust’s very popular annual family day. There will be a host of activities including river dipping, stalls, live music, a barbeque, a Fullers bar, children’s activities and much more! It’s a lovely day for families to come down to Chiswick Pier and enjoy all aspects of the river. 22 August: Watercolour workshop with Julia Cassels - Join us for a day’s watercolour workshop for adults, hosted by artist Julia Cassels at Chiswick Pier Trust. A specialist in ink and watercolour, Julia uses these mediums with a modern twist. Julia spent over a decade in the African bush and this intensity of experience allows her a deep and sympathetic understanding of animal subjects. She is also author of How to Capture Movement in Your Painting.







"Entertaining, engaging and full of charm"  
★★★★

"'When You Fall Down' is a triumph"

# WHEN YOU FALL DOWN

The Buster Keaton Story

Book, music & lyrics by James Dangerfield  
Arrangements & instrumentals by Martyn Stringer

1928. Silent screen star Buster Keaton arrives at MGM in Culver City, the film studio which is his new home, and reflects on his life and career.

**TABARD THEATRE**

**26 - 28 April 2018**

Tabard Theatre, 2 Bath Road, London W4 1LW

More info and tickets: [tabardtheatre.co.uk](http://tabardtheatre.co.uk)

# Orange Tree Theatre

## WINNER OF THE AWARD FOR London's Most Welcoming Theatre 2017



**25 JANUARY – 3 MARCH**  
**3 thrilling new plays in repertoire**

A Paines Plough, Orange Tree Theatre & Theatr Clwyd co-production

### Black Mountain

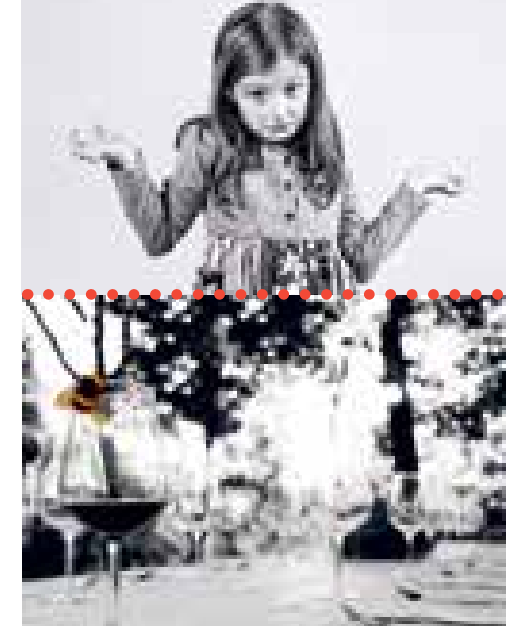
**A NEW PLAY BY BRAD BIRCH**

★★★★ "Keeps you guessing right to the end." *The Times*

### Out Of Love

**A NEW PLAY BY ELINOR COOK**

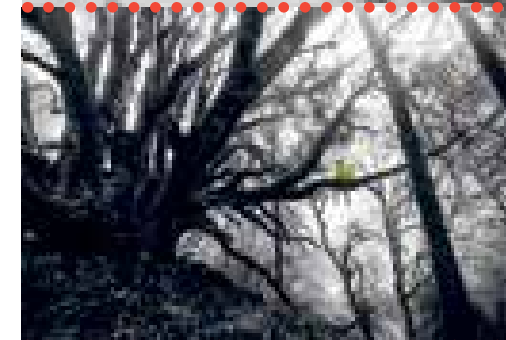
★★★★ "A fiery, tender story of female friendship." *The Guardian*



### How To Be A Kid

**A NEW PLAY BY SARAH McDONALD-HUGHES**

★★★★ "This is storytelling at its finest." *British Theatre Guide*



**8 MARCH – 14 APRIL**

### Humble Boy

**BY CHARLOTTE JONES**

First major revival of this award-winning comedy



**19 APRIL – 26 MAY**

### Mayfly

**A NEW PLAY BY JOE WHITE**

A family searches for new beginnings

**1 JUNE – 7 JULY**

### Utility

**BY EMILY SCHWEND**

European premiere of the Yale Drama Prize winner

**[orangetreetheatre.co.uk](http://orangetreetheatre.co.uk) 020 8940 3633** NO BOOKING FEES

Just one minute from Richmond Station | Free parking nearby after 6.30pm

LONDON BOROUGH OF  
RICHMOND UPON THAMES





**Part Time Marketing Manager**

Salary £20,000 - £23,000 per annum (Term Time Only, 25 hours per week)

**The School**

The Falcons Pre-Preparatory School for Boys is a thriving and highly successful non-selective, independent school for boys aged three to seven, based in GreenPark, West London. The school, formerly known as House Boys, was founded in 1956 and at that time located in Notting Hill. In 1988 it transferred to its present site in Barnsley Gardens, changing its name to The Falcons. It is the founding member of the Falcons Group and part of the Alpha Plus Group, one of the UK's most successful educational organisations.

**The Role**

The Marketing Manager is responsible for planning and implementing marketing strategies and activities to grow recruitment, retention and brand awareness for Falcons Pre-Preparatory School for Boys.

Working in partnership with APC's Marketing Director, the Head and the Registrar, the Marketing Manager is responsible for developing the school's marketing strategy, devising and implementing quarterly plans, tracking and reporting on key performance indicators.

For further details and to apply please visit the Alpha Plus Group website at:  
<http://www.alpha-plus.co.uk/alpha-plus-schools/education/learn-more>

**Closing Date: 1<sup>st</sup> April 2018**

*The school is committed to safeguarding and promoting the welfare of children and young people and expects all staff and volunteers to share this commitment. The successful applicant will be subject to an enhanced DBS check and references being taken.*

*The school has an equal opportunities policy and a recruitment of ex-offenders policy which are designed to ensure that all applicants for appointment within the school are treated fairly, irrespective of race, gender, marital status, religion or political beliefs, sexual orientation, responsibility for dependants, age, physical/mental disability or offending background.*

PWR Media

# viestra

M A G A Z I N E

## Advertising Sales Executive required

Do you have a background in media sales?

We are looking to recruit an experienced advertising sales person to join a small but established team in Chiswick. The successful applicant will have at least 5 years advertising sales experience.

Selling advertising space across our print and digital platforms, knowledge of pitching to ad agencies would be advantageous.

Salary: **£26k pa + Generous OTE**

Please email your cv to [paul@viestramagazine.com](mailto:paul@viestramagazine.com) to arrange a telephone interview.

### LICENCING ACT 2003 APPLICATION FOR LICENCE NEWSPAPER ADVERTISEMENT

**NOTICE IS GIVEN THAT**

(a) Full name of applicant: Urban Pantry London LTD

**HAS APPLIED TO THE LONDON BOROUGH OF HOUNSLOW FOR**

(b) Provide a brief summary of the application setting out the proposed licensable activities (supply of alcohol, refreshment, regulated entertainment (specifying the type))

We currently have an alcohol license until 20.00, but we would like to extend it until 23.00. We have no intention of staying open until that time every day, it just makes hosting our bi-monthly Supper-clubs easier.

We have held an alcohol license for over a year now with no problems.

**FOR THE PREMISES**

(c) Name and address of premises

Urban Pantry  
15 Devonshire Road,  
Chiswick  
W4 2EU

**APPLICATION HAS ALSO BEEN MADE FOR THE FOLLOWING OPENING HOURS**

10.00-23.00

**ANYONE WISHING TO MAKE REPRESENTATIONS TO THIS APPLICATION MUST GIVE NOTICE IN WRITING TO:**

Regeneration, Economic Development & Environment Department - Licensing  
London Borough of Hounslow, Civic Centre  
Lampton Road,  
Hounslow TW3 4DN

Any representations must be received by (please enter the date 20 days from the day following submission of application to the licensing authority). Regrettably no representations can be received after this date. A person making representation may address members of the licensing panel at a subsequent hearing, although all representations will be considered whether the author attends or not.

The full application can be viewed online at: [www.hounslow.gov.uk](http://www.hounslow.gov.uk) or at the above address during normal opening hours.

Town and Country Planning (Development Management Procedure) (England) Order 2015 NOTICE UNDER ARTICLE 13 OF APPLICATION FOR PLANNING PERMISSION

(Notice 1: This notice is for publication in local newspapers if Certificate E or F is completed)

**Proposed development at:**

Name of the landowner: [Blank]  
Property number or name: [Blank]  
Street: [Blank]  
Locality: [Blank]  
Town: [Blank]  
County: [Blank]  
Postal town: [Blank]  
Postcode: [Blank]

**Take notice that application is being made by:**

Organisation name: [Blank]  
Applicant name: [Blank] Title: [Blank] First name: [Blank] Surname: [Blank]

**For planning permission for:**

Description of proposed development: [Blank]

**Local Planning Authority to whom the application is being submitted:** [Blank]  
Local Planning Authority address: [Blank]

**Any owner of the land or tenant who wishes to make representations about the application, should write to the council within 21 days of the date of this notice.**

**Signatory:**

Signature: [Blank] Title: [Blank] First name: [Blank] Surname: [Blank]

**Signature:** [Blank]

**Date (dd/mm/yyyy):** [Blank]

**Statement of owner's rights:** The grant of planning permission does not affect owner's rights to retain or dispose of their property, unless there is some provision to the contrary in an agreement or lease.

**Statement of agricultural tenancy rights:** The grant of planning permission for non-agricultural development may affect agricultural tenancy interests of tenants.

**Owner** means a person having a freehold interest or a leasehold interest the unexpired term of which is not less than seven years.

**Tenant** means a tenant of an agricultural holding any part of which is comprised in the land.

This notice is for publication in a local newspaper.



# LAUNCHING 12<sup>TH</sup> MAY

A COLLECTION OF JUST SIX EXCLUSIVE FOUR BEDROOM TOWNHOUSES WITH PRIVATE BALCONIES AND TERRACES.

These contemporary new properties are arranged over four floors and benefit from high specification kitchens and bathrooms and two parking spaces. Keelson Gardens is situated around a beautifully landscaped courtyard on the award winning Brentford Lock West development.

To arrange your appointment contact our Sales Team

**020 3504 6403**  
[brentfordlockwest@stubbingsltd.co.uk](mailto:brentfordlockwest@stubbingsltd.co.uk) [brentfordlockwest.co.uk](http://brentfordlockwest.co.uk)

Marketing Suite open daily 10am to 5pm,  
Boaters Avenue, Brentford Lock West, TW8 8FE

Computer generated images. Details and final as built product may vary on completion of development.

**WATERSIDE**  
— PLACES —  
 



B

≡

BORTHWICKS

estate agents - lettings

020 8994 8441

3 Chiswick Park Station London W4 5NF

lettings@borthwicks.co.uk



Parkside, Acton W3

£325,000

Lovely one bedroom property with private off street parking. The flat comprises reception joining onto a fully integrated kitchen, double bedroom and bathroom with shower over the bath. Located on East Acton Lane adjacent to the popular Acton Park recreational ground and just moments from The Vale with its many local shops. With a secured gated entrance and private internal gardens, this property will be very popular and early viewings are recommended.  
Excellent first time purchase or buy to let investment with 4.66% yield. Offered to the market with no onward chain .EPC rating C.



Ivy Crescent, W4

£820,000

A stunning 3 bedroom, 2 bathroom split level apartment with garden and Freehold title comprising solid Dutch oak flooring in the living area and bedroom with plenty of built in storage, original Victorian spiral stairway leading down to private garden, open plan hand built kitchen with Corian work tops and integrated appliances, and a stunning wet room. Top floor offers family bathroom and 2 good size bedrooms with fully fitted luxury carpets. All original windows were restored in 2012. This property needs to be seen. Ivy Crescent is located close to Chiswick High Road and within a very short walk to Chiswick Business Park and Chiswick Park Station (District Line).



Ivy Crescent, W4

Offers + £600,000

Share of Freehold, ground floor, two double bedrooms, period conversion flat which has been beautifully refurbished with engineered wooden flooring and double glazed throughout, within easy reach of Chiswick Park tube station. Accommodation currently comprises shared entrance into private hallway, a front bedroom currently used as a comfortable reception/guest bedroom, a second good sized rear bedroom, newly refurbished bathroom, rear reception and new fitted kitchen with sky light and under floor heating. The property is situated off Bollo Lane with on street parking and it is a short walk to Chiswick Park tube station. EPC rating D.



Fairlawn Avenue, W4

Offers around £400,000

One bedroom flat in need of total modernisation with room to extend on Fairlawn Avenue .Property will suit cash buyers or developers.  
Less than 300 meters to Chiswick Park Station.

B

≡

BORTHWICKS

estate agents - lettings

020 8994 8441

3 Chiswick Park Station London W4 5NF

lettings@borthwicks.co.uk



Dewsbury Court, W4

£275 per week

1 bedroom 3rd floor apartment close to Chiswick Park tube station and Chiswick High Road. Accommodation comprises of 1 double bedroom, bathroom, and a fitted kitchen with open plan reception room. Dewsbury Court is located on Chiswick Road within the Belmont Primary School catchment area. It is a short walk to Chiswick Park station as well as the open space of Turnham Green and Chiswick High Road. Available from the 9th May. EPC - D. Fees apply.



Woodstock Road, W4

£184 per week

On Offer here is a double bedroom in a quiet property on Woodstock Road in the heart of Chiswick, sharing the flat with the owner and one other female tenant. You will have access to all areas of the house including a large lounge with open plan kitchen. The bathroom is shared with just the one other tenant. Located just minutes from Turnham Green Tube Station and also Chiswick high Road. \*\*ALL BILLS INCLUSIVE\*\* EPC – E. Fees apply.



Grosvenor Lodge, W4

£335 per week

Fully redecorated ground floor, two bedroom property with access to a shared garden. The property consists of two bedrooms, a large reception room with lots of natural light and rear access door to the communal garden, a fully fitted kitchen, modern bathroom and lots of storage. Located directly across the road from Gunnersbury Tube Station and only a five minute walk to Chiswick High Road with its many shops, bars and boutiques. For the motorist the A4 / M4 is also just minutes away. EPC - D. Fees apply



Hamlet Gardens, W6

£448 per week

Borthwicks are pleased to offer this stunning refurbished one bedroom flat in Hamlet Gardens W6. The property is offered fully furnished or unfurnished and comprises one double bedroom, lounge, modern Kitchen and bathroom. Hamlet Gardens is within a stone’s throw from the open space of Ravenscourt Park and is also within a few minutes’ walk from Stamford Brook & Ravenscourt Park Tube Stations. The property is ideally located easy reach to Chiswick High Road and King Street which both offer plenty of top quality restaurants, shops and superb transport links. AVAILABLE NOW. Viewing Highly Recommended. Current EPC rating - D. Fees apply.



Horn Lane, W3

£325 per week

Borthwicks are offering this completely refurbished 2 bedroom, top floor flat conversion within easy reach of multiple transport services. Accommodation comprises a spacious open plan reception with new fully fitted kitchen, 2 double bedrooms with built in storage and a bathroom. In addition to this the property has access to a balcony for summer dining. It is located within a 2 minute walk to Acton Mainline station with many bus services available in Horn Lane. Twyford & Derwentwater Schools are also within an easy walk with Acton High Road with its many shopping and transport facilities a short bus ride away. There is also easy road access to the west & north via A40/M40. EPC - TBC. Fees apply.



Hamlet Gardens , W6

£598 per week

Borthwicks are pleased to offer this stunning refurbished two bedroom flat in Hamlet Gardens W6. The property is offered fully furnished or unfurnished and comprises two bedrooms, lounge, modern Kitchen and bathroom. Hamlet Gardens is within a stone’s throw from the open space of Ravenscourt Park and is also within a few minutes’ walk from Stamford Brook & Ravenscourt Park Tube Stations. AVAILABLE NOW. Viewing Highly Recommended. Current EPC rating - D. Fees apply.



**£485  
PER WEEK**

**Newly built**

**2 Double  
Bedrooms**

**En-Suite Bathroom**

**Private Balcony**

**Near Chiswick  
Park Tube Station**

**Open plan  
Lounge/Kitchen**

**To  
LET**

## *Newly built luxurious two double bedroom flat*



### **Burlington Green, Chiswick W4**

Borthwicks are pleased to be offering this newly built luxury two double bedroom flat that is within a 30 sec walk from Chiswick Park Tube Station (District Line). The flat consists of two double bedrooms with the master bedroom boasting an En-Suite that has a full bath for relaxing after a hard day's work along with a shower for those refreshing early morning starts. The open plan Lounge/Kitchen is a bright space and perfect for entertaining guests as well

as taking a relaxing morning breakfast as from here is where you access your private balcony overlooking Gunnersbury triangle. With a further bathroom this flat lends itself to the busy professional couple or single alike. Along with being close to the Tube the flat is also within a two minute walk from all the amenities of Chiswick High Road as well as the A4/M4 corridor for those needing speedy links.



Please call to arrange a private viewing Paul Charman, Lettings Manager 020 8994 8441  
www.borthwicks.co.uk

**For  
SALE**

**£820,000  
FREEHOLD**

**Single Family  
Property**

**3 Bedrooms**

**Wet Room**

**Family Bathroom**

**Approx. 1044 sq. ft.**

**Garden**

**Amazing Kitchen**

**Beautifully Presented**

## *A stunning 3 bedroom, 2 bathroom split level apartment with a garden*



### **Ivy Crescent, Chiswick, W4**

Coming with a Freehold title occupying the first and top floor of this Victorian house, accommodation comprises solid Dutch oak flooring in the living area and bedroom with plenty of built in storage, original Victorian spiral stairway leading down to private garden, open plan hand built kitchen designed by the chef owner allowing amazing entertaining space with Corian work tops and integrated appliances, and a stunning wet room with exposed London Stock bricks.

Top floor offers family bathroom and 2 good size bedrooms with fully fitted luxury carpets. All original windows were restored in 201, light switches and power points are finished in black nickel. This property needs to be seen. Ivy Crescent is located close to Chiswick High Road and within a very short walk to Chiswick Business Park and Chiswick Park Station (District Line).



Please call to arrange a private viewing Robert Winter, Sales Director 020 8994 8441  
www.borthwicks.co.uk





Chiswick  
Hammersmith  
West Kensington  
Fulham  
Chelsea

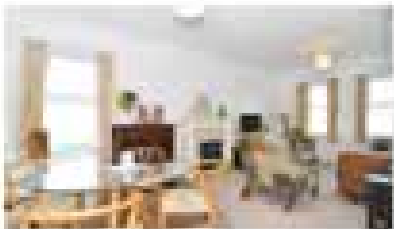
Battersea  
Clapham  
Putney  
Barnes  
Richmond

Kew  
Sheen  
Twickenham  
Teddington  
Kingston

featherstoneleigh.co.uk



STANDARD AGENCY FEE - £250 (incl. VAT) per property for advertising - £275 (incl. VAT) per property for the agency agreement



PARK MANSIONS, STAMFORD  
BROOK

A beautifully presented two bedroom, two  
bathroom, apartment in an elegant mansion style  
building with paved off-street parking. EPC = C



2 2 1

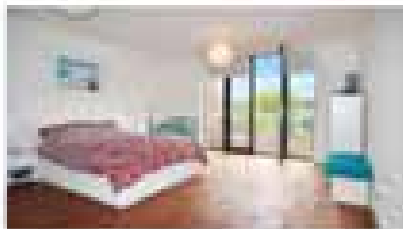
GUIDE PRICE  
£650,000

CHISWICK 020 8994 8367



WINCHESTER STREET, ACTON

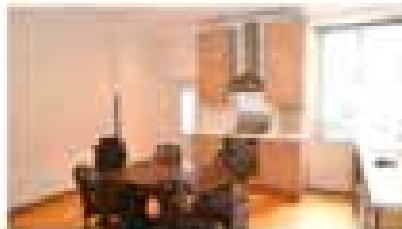
A two bedroom split-level apartment in a secure  
development, ideally situated for Chiswick and  
surrounding areas. EPC = B



2 2 1

GUIDE PRICE  
£685,000

CHISWICK 020 8994 8367



ADDISON GROVE, CHISWICK

An extremely spacious first floor two bedroom  
apartment located within the heart of Bedford  
Park. Reception room and open-plan kitchen  
dining area. EPC = D



3 1 1

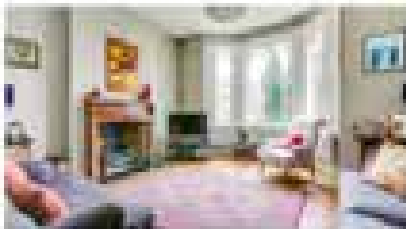
TO LET FROM  
£2,383

CHISWICK 020 8747 1093



SUTTON LANE SOUTH, CHISWICK

A substantial four bedroom family house in desirable  
Sutton Lane, within easy reach of Chiswick Park,  
underground station and the High Street. EPC = E



4 2 2

TO LET FROM  
£5,500

CHISWICK 020 8747 1093



LINDEN GARDENS, CHISWICK

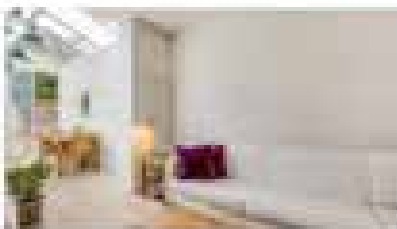
A new to the market two bedroom townhouse,  
beautifully refurbished throughout with a flexible  
configuration and great balance between reception  
space and bedrooms. EPC = D



3 3 2

GUIDE PRICE  
£1,899,950

CHISWICK 020 8994 8367



ARLINGTON GARDENS, CHISWICK

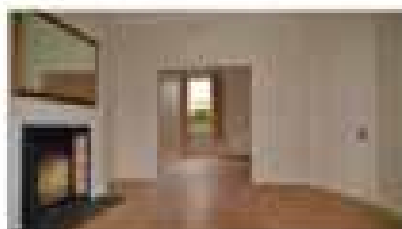
An immaculate and substantial three bedroom, two  
bathroom, converted apartment with a private  
garden, situated on the ground floor of an elegant  
period building. EPC = E



3 2 1

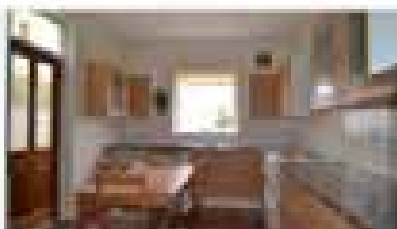
GUIDE PRICE  
£925,000

CHISWICK 020 8994 8367



SILVER CRESCENT, CHISWICK

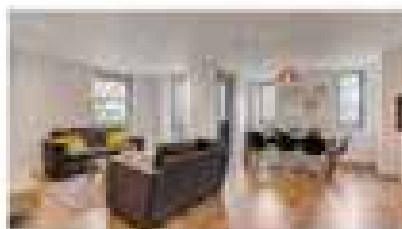
Currently located a short walk from both  
Surreybury and Chiswick Park stations, this  
beautiful three bedroom terraced house has a private  
garden. EPC = D



3 1 2

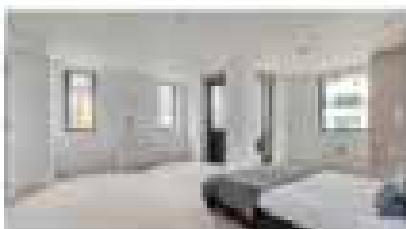
TO LET FROM  
£2,427

CHISWICK 020 8747 1093



STRAND ON THE GREEN,  
CHISWICK

An immaculate three bedroom ground floor  
apartment in a small purpose-built block at the foot  
of New Bridge, close to Strand on the Green. EPC  
= C



3 2 1

TO LET FROM  
£2,900

CHISWICK 020 8747 1093



# VIDA

LONDON W3

## ACTON EMOTION



**8 MINS**  
East Acton



**9 MINS**  
Notting Hill Gate



**16 MINS**  
Bond Street



**26 MINS**  
Bank

## ENTERTAIN THIS POINT OF VIEW

Introducing **The Vertex Collection**, a limited selection of superb 2 bedroom duplex apartments; many with far reaching views across the cityscape and some even benefitting from a study space that could be used as a third bedroom.

Just imagine waking up to morning coffee on your private balcony, relaxing at the weekend or entertaining friends - the ability to extend your living space outside makes a new home at VIDA a real lifestyle decision.

Spacious 1 bedroom apartments  
from **£450,000**

Stunning 2 bedroom apartments  
from **£532,500**

Luxurious 2 bedroom duplexes  
from **£692,500**

**TWO BEDROOM SHOW APARTMENT OPEN DAILY**

[www.vida-apartments.com](http://www.vida-apartments.com) | 020 3910 9750

Show Apartment open daily 10am – 5.30pm (11am – 7pm Thursdays)



External image is computer generated and indicative only. Prices correct at time of going to press.

Think Chiswick  
property.  
*Think KFH.*

[kfh.co.uk/chiswick](http://kfh.co.uk/chiswick)

## London-wide reputation. Local expertise.

With 40 years' experience and 60 branches across the Capital, our local knowledge and London network will ensure we achieve the right result for you.

If you're thinking of buying, selling, renting or letting, contact your local branch today:

### KFH Chiswick

163-165 Chiswick High Road, W4 2DT

#### Christopher Stamp

**Sales Manager**

**Sales** 020 8987 0090

**Email** [chiswick.sales@kfh.co.uk](mailto:chiswick.sales@kfh.co.uk)

#### Rebecca Beveridge

**Lettings Manager**

**Lettings** 020 8987 0099

**Email** [chiswick.lettings@kfh.co.uk](mailto:chiswick.lettings@kfh.co.uk)

**Kinleigh Folkard & Hayward**

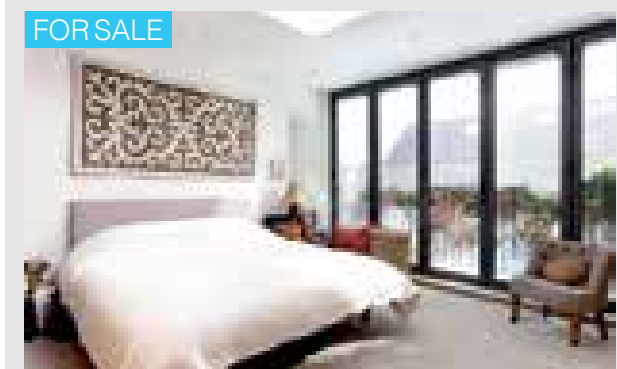
[kfh.co.uk](http://kfh.co.uk)

**COMPLETELY LONDON**





**Alwyn Avenue, London, W4 £3,495,000 Freehold**  
Five bedrooms, five reception rooms, five bathrooms, garden, outbuildings, private parking. **EPC: C**



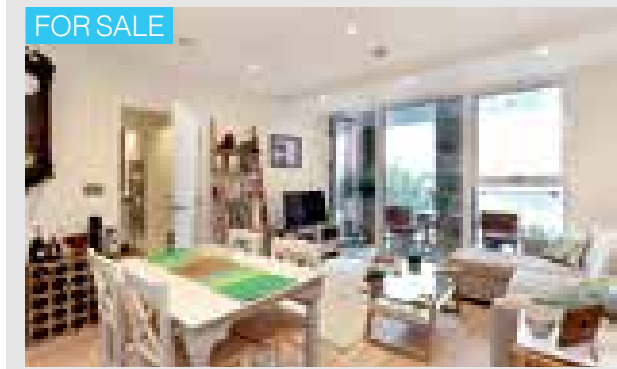
**Saville Road, London, W4 £1,500,000 Freehold**  
Four bedrooms, two reception rooms, two bathrooms, terraced, period, garden. **EPC: C**



**Heathfield Terrace, London, W4 £1,200 Furnished**  
Two double bedroom top floor apartment, open plan kitchen/ reception, two modern bathrooms. **EPC: C**



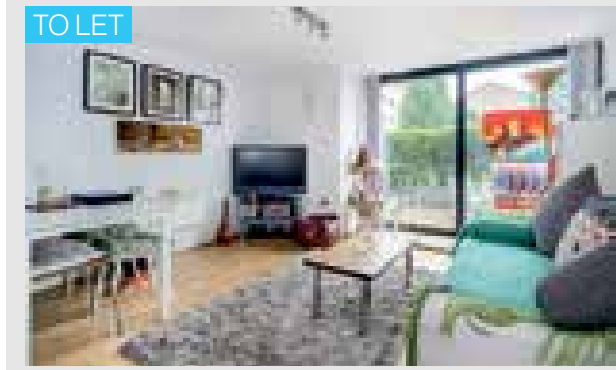
**Bath Road, London, W4 £1,150 pw Un/Furnished**  
Two bedrooms, two luxury bathrooms (one en suite), double height living/dining/tv area, garden. **EPC: D**



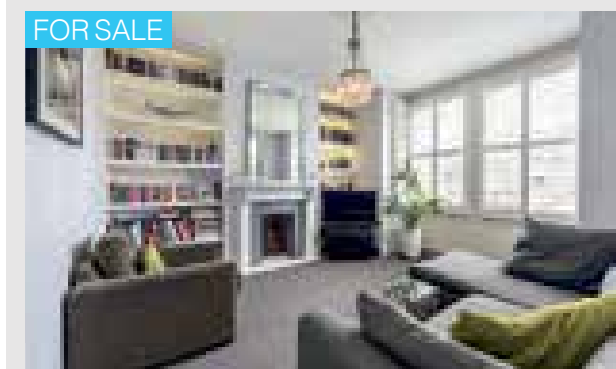
**Ravilious House, London, W6 £535,000 Leasehold**  
One bedroom upper floor flat with one reception room, bathroom and balcony. **EPC: B**



**Thames Crescent, London, W4 £2,000,000 Freehold**  
Five bedrooms, two reception rooms, four bathrooms, balcony, garden, private parking, waterside views. **EPC: C**



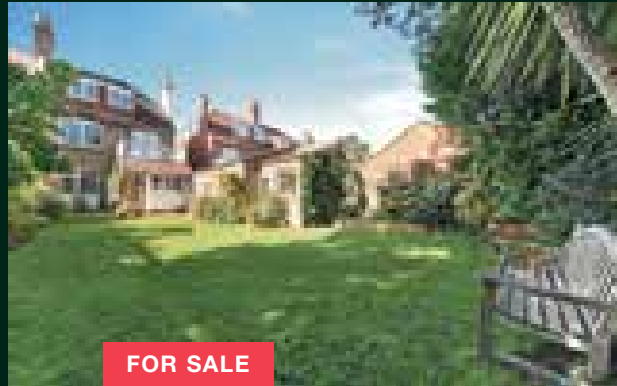
**Great West Road, London, W6 £360 pw Furnished**  
One bedroom flat, living room with access to a private terrace, kitchen, contemporary bathroom, on-site porter. **EPC: D**



**Speldhurst Road, London, W4 £900,000 Leasehold**  
Four bedrooms, reception room, two bathrooms, terraced period maisonette, garden, close to station. **EPC: C**



**Hartington Road, London, W4 £650 pw Furnished**  
Three bedroom house, two bathrooms, reception, kitchen, private roof terrace, garage. **EPC: D**



**The Avenue, Chiswick W4**  
6 bedrooms, 2 bathrooms, kitchen, 3 reception rooms, garden room, balcony, garden, parking. Freehold. Guide price: £2,950,000.



**Chiswick Quay, Chiswick W4**  
5 bedrooms, 3 bathrooms, reception room, kitchen/ dining room, utility, garage, garden, parking, terrace. EPC: D. Freehold. Guide price: £2,200,000.



**Harvard Road, Chiswick W4**  
2 bedrooms, 2 bathrooms, reception room, kitchen/dining room, private garden, basement. EPC: D. Share of Freehold. Guide price: £900,000.



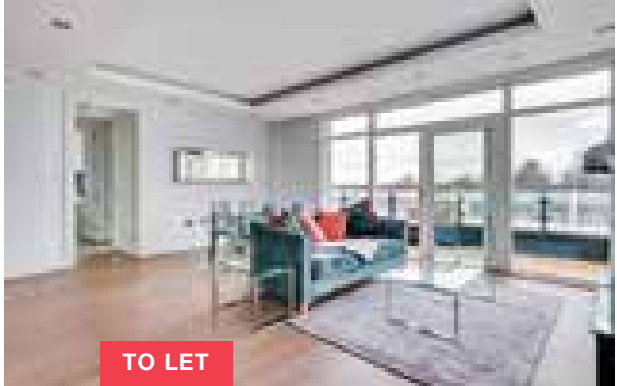
**Blandford Road, Chiswick W4**  
4 bedrooms, 2 bathrooms, double reception room, kitchen, guest cloakroom, garden. EPC: E. Furnished or unfurnished. Guide price: £825 pw.



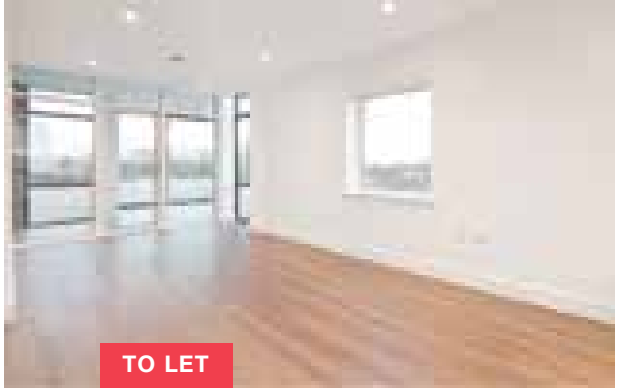
**Mayfield Avenue, Chiswick W4**  
5 bedrooms, 3 bathrooms, WC, double reception room, kitchen/dining room, dressing room, gardens. EPC: D. Freehold. Guide price: £2,695,000.



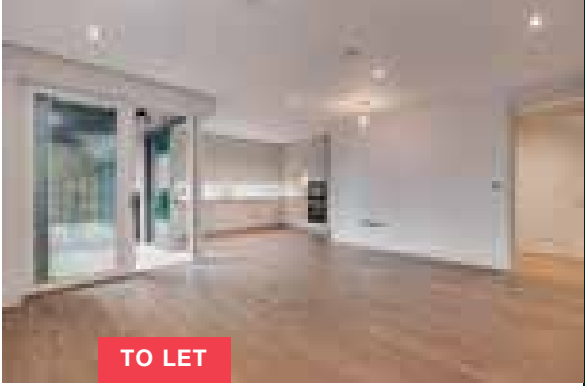
**The Coach House, London, TW8**  
4 bedrooms, 2 bathrooms, 2 reception rooms kitchen/dining/family room, downstairs WC, garden. EPC: D. Freehold. Guide price: £1,650,000.



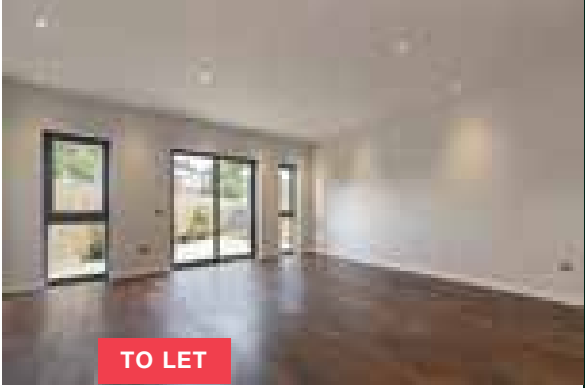
**Renaissance Square, Chiswick W4**  
2 bedrooms, 2 bathrooms, open plan reception room, kitchen, dressing room, terrace. EPC: B. Furnished. Guide price: £700 pw.



**Boulogne House, Isleworth TW7**  
2 bedrooms, 2 bathrooms, open plan reception room, kitchen, winter garden, parking. EPC: B. Unfurnished. Guide price: £425 pw.



**Renaissance Square, Chiswick W4**  
2 bedrooms, 2 bathrooms, open plan reception room, kitchen, guest cloakroom. patio garden. EPC: B. Unfurnished. Guide price: £615 pw.



**Gunnersbury Mews, Chiswick W4**  
5 bedrooms, 4 bathrooms, reception, kitchen utility, patio, balcony, garage. EPC: B. Furnished or unfurnished. Guide price: £1,615 pw.



EXCEPTIONAL  
PROPERTIES FOR SALE  
AND TO LET IN CHISWICK

To find out how we can help you please contact us

KnightFrank.co.uk/chiswick  
chiswick@knightfrank.com  
020 8022 3792

KnightFrank.co.uk/chiswicklettings  
chiswicklettings@knightfrank.com  
020 8022 2182

All potential tenants should be advised that, as well as rent, an administration fee of £276 will apply when renting a property. Please ask us for more information about other fees that may apply or visit KnightFrank.co.uk/tenantcharges

@KnightFrank  
KnightFrank.co.uk  
OnTheMarket.com





# WINDOWS

## DOORS & CONSERVATORIES

UPVc | BI FOLD DOORS | TIMBER FRAMES



**UNBEATABLE PRICES**  
NO OBLIGATION QUOTE | WORK GUARANTEED

TEL RICHARD ON 07748 967 824

**ADVERTISE IN THE CHISWICK HERALD TRADE PAGES**  
REACH OUR READERS FOR AS A LITTLE AS £10-VAT PER ISSUE

Mini Bold Lineage advert: £10-VAT per issue

3cm x 2 column advert £20-VAT per issue

5cm x 2 column advert £25-VAT per issue

Call Annmarie on 0203 623 0567 or email annmarie@chiswickherald.co.uk

**PAINTER & DECORATOR**  
OVER 30 YEARS EXPERIENCE  
Substantial Chiswick client base  
TIDY & PROFESSIONAL  
Call Gary on 020 3623 0567

## DG BRICKWORK

**Weather-Struck  
Lime Pointing**

www.dgbrickwork.co.uk

Ealing Based

**07747 032 326**

### Business Services

**• ACF**  
Business finance.  
Contact ACF for a free  
no-obligation quote on sell-  
ing your trade invoice today:  
07800 862499 / 0208  
987 0429 (evening calls or  
weekends welcome)  
info@appliedcorporatefin-  
ance.co.uk

**• BOOK KEEPER AVAIL-  
ABLE**  
All general book keeping.  
Proficient with Sage and  
Quick Books excel etc. £20  
per hour.  
07748 982 917

### Cleaning Services

**• FLOWER MAID**  
Based in West London's  
Chiswick offering a wide  
range of (regular and  
one-off cleaning services)  
including:  
• house cleaning  
• spring cleaning  
• tenancy cleaning  
• builders cleaning  
• carpet and window  
cleaning  
www.flowermaid.co.uk  
020 7117 6217

**• DOMESTIC CLEANERS**  
All aspects of domestic  
cleaning undertaken. Hourly  
and day rates.  
07748 982 917

**• MITE KILLERS**  
Mite Killers Ltd will provide  
you with the most compre-  
hensive cleaning service  
carried out by fully trained,  
insured and experienced  
experts.  
07736 981 444 info@  
mitkillers.co.uk  
www.mitkillers.co.uk

### Construction & Building Services

**• RICHARD  
WILLIAMS - BUILDER**  
Loft conversions, extensions,  
kitchens, basement refur-  
bishment and construction  
Based in Kew - 07748 967  
824

**• W&M BUILDING AND  
DECORATING**  
We are a building and de-  
corating company that offer  
a comprehensive building  
service for everybody.  
07899650348  
info@wmbuilding.co.uk  
www.wmbuilding.co.uk

**• P DONOVAN LTD  
BUILDERS**  
Local building company with  
over 25 years experience in  
the trade.  
P.Donovan Ltd,  
2 Evelyn Rd, W4,  
0208 994-4917  
donovan438@btinternet.  
com  
www.pdonovanltd.co.uk

**• CONCEPT  
BESPOKE  
INTERIORS**  
Concept House,  
33 Colville Road, London,  
W3 8BL  
T. 0208 994 4118  
F. 0208 994 9989  
www.concept-be-  
spoke-interiors.co.uk

**• BEST BUILDERS  
FAUCONBERG**  
Court, Fauconberg Road,  
London, W4 3JQ 020 8987  
3773

**• LEVELINE BUILDERS**  
5 Devonshire Road, London,  
W4 2EU 020 8992 2909  
**• ART PROPERTY RENO-  
VATIONS**  
Grove Park Studios,  
188-192 Sutt, Chiswick,  
London, W4 3HR  
0844 656 0982

**• TAW ENGINEERING  
LTD**  
38 Sutton Court Road, Lon-  
don, W4 4UJ  
020 8995 5438

**• MARKSTONE CON-  
STRUCTION UK LTD**  
Unit 6 Greenock Road, Lon-  
don, W3 8DU  
020 8740 8060

### Damp Proofing/ Treatment

**• DAMP PROOFING  
AND BASEMENT WATER  
PROOFING**  
Damp Proofing, Rising  
Damp, Basement Water-  
proofing, Condensation Con-  
trol, Woodworm Treatments  
and Property Preservation.  
For an inspection, assess-  
ment and estimate call  
Richard 07748 967 824

### Dry Cleaners

**• HALINAS TAILORING &  
DRY CLEANERS**  
Alterations & Repairs, dry  
cleaning, Relining, Zip  
replacement, Curtains &  
Venetian blinds, fitting room,  
shoe repairs, 1888 Acton  
Lane, Chiswick, W4 5DL  
020 8995 8725  
halinkosa89@btinternet.  
com

**Carpenter, locksmith,  
painter & decorator**  
with over 20 years experience.  
Tidy & professional. 24 hour service.  
Call Andreas:  
07476 206 140 07482 712 715

**• THE PRESS GANG DRY  
CLEANERS IN CHISWICK**  
3-4 Promises Corner, Lon-  
don, Greater London W4  
4HA  
020 8742 3244

**• THE AMERICAN DRY  
CLEANING COMPANY**  
5 Grove Park Rd, London,  
Greater London W4 3RS  
020 8742 3333

**• TOP HAT DRY CLEAN-  
ERS**  
Opened in 1968 and remain  
a family run business to this  
day  
20 Devonshire Road,  
Chiswick W4 2HD www.  
tophatchiswick.co.uk  
020 8995 9813

### Electrical Services

**• RA ELECTRICAL SER-  
VICES**  
Domestic & Commercial  
Installations. Bespoke In-  
stallations & Design Additions  
& Alterations. Maintenance  
Data & Internet HD. Wireless  
Music Systems.  
07725181967  
reeservices@live.co.uk

**• STEVE BISHOP ELEC-  
TRICAL**  
90 Hallinson Road, London  
SW11 1BN  
020 7934 1421  
07864 734718  
steve@swbshop.co.uk  
www.swbshop.co.uk

**• HENNESSY  
ELECTRICAL SERVICES**  
Full domestic Electrical  
registered.  
General repairs. 07951 956  
047

**• IAK ELECTRICIANS &  
PLUMBERS**  
www.iakelectricians.  
co.uk  
07849 059999

**• NURSE  
ELECTRICIANS**  
36 Weymouth Avenue, Lon-  
don, W5 4SB  
020 8547 6163  
**• T C S ELECTRICALS**  
145 Bentworth Road, Lon-  
don, W12 7AB  
07713 417 427

### Gardening Services

**• IL GIARDINO**  
Garden Design and main-  
tenance. General garden work.  
CALL ENRICO  
020 8578 2424 / 07803  
211 935

**• URBANSCAPING UK**  
Garden Design, landscaping  
and maintenance.  
Yorks Yard, 124 Sutton Lane  
North, Chiswick, London,  
W4 4LD  
office@urbanscapinguk.  
com 020 8995 5777

**• THE SAFFA GARDENER**  
Call Craig: 07737 216660  
thesaffagardener@hotmail.  
com

**• THE CHISWICK  
GARDENER**  
30 Hartington Court Harting-  
ton R, London, W4 3TT  
07771 998777

**• ABOVE THE EARTH LTD**  
39 Wilton Avenue, London,  
W4 2HX 020 8994 3905

**• CREATIVE URBAN  
TREE SURGERY &  
BRIGHTER GARDEN**  
37 Viletsa Road, London, W3  
7TQ 0800 2792156

**• Thames  
Landscaping**  
Projects range from a basic  
lawn, to the full garden  
design and construction.  
John@Thameslandscap-  
ing.co.uk  
07958 615 461

### Estates Agents & Property Management

**• ASPIRE PROPERTY  
MANAGEMENT**  
We have a broad portfolio of  
properties across Surrey and  
Middlesex with landlords in  
Chiswick, Kew and Hampton.  
07748 982 917

### Graphic Design

**• WEST 4 MEDIA**  
Design, Development & all  
things Web.  
07748962693  
info@west4media.co.uk  
www.west4media.co.uk

**• GRAPHIC DESIGNER -  
PRINT & WEB**  
Freelance graphic design-  
er. From £35 per piece of  
artwork - includes unlimited  
amends until you are happy.  
£10 amendment thereafter.  
pwgraphics@live.co.uk

### Interior Design

**• CONCEPT BESPOKE  
INTERIORS**  
Concept House, 33 Colville  
Road, London, W3 8BL  
0208 994 4118  
0208 994 9989  
www.concept-be-  
spoke-interiors.co.uk  
**• HELEN REED  
DESIGNS**  
478 Chiswick High Road,  
London, W4 5TT  
020 8994 9993

**• AREEN DESIGN  
SERVICES LTD**  
147 Chiswick High Road,  
London, W4 2DT  
020 8994 9396  
**• CHANGE THAT ROOM**  
478 Chiswick High Road,  
London, W4 5TT  
020 8994 9993

**• MCFARTLIN PLASTER-  
ING**  
Claron McPartlin, 104 Avalon  
Road, Ealing, London  
W13 8BW  
020 8998-3455 07958  
445303 claron@mcp-  
artlin-plastering.co.uk

**• WEST LONDON PLAS-  
TERING**  
3 Devonshire Mead W4 2HA  
07953 533 329

**• WILLIAM NICKERSON  
ARCHITECTURAL & INTER-  
IOR DESIGN**  
9 Goldhawk Mews, London,  
W12 8PA 020 8749 7900

### Painters & Decorators

**• BULGER WICKS DECO-  
RATING**  
Based in W4  
020 8994 4455

**• JCK PAINTING AND  
DECORATING**  
Chiswick 07866738743

**• AG Interiors**  
020 8994 6664

**• JTW CONTRACTORS -  
Painting contractors London**  
The Lightbox, Unit 1.20, 111  
Power Road, London, W4  
5PY 020 7940 4790

**• C P SCOTT DECORAT-  
ING & PROPERTY MAIN-  
TENANCE**  
020 87474073

**• YOUR LOCAL PAINTER  
&  
DECORATOR**  
-Chiswick- Kew - Isleworth  
15 The Maltings, Spring  
Grove Kew Bridge, London,  
W4 3HR  
020 8560 3701

**• CHISWICK PAINTER  
AND DECORATOR**  
Chiswick  
07748 982 917

**• SCOTT ACKROYD  
PAINTER & DECORATOR**  
Interior & Exterior  
020 8747 1278  
07779 738396  
ackroydscott@google-  
mail.com

### Plastering Services

**• KEW PLASTERING  
SERVICES**  
All aspects of plastering. We  
have worked on listed build-  
ings. No obligation quotes.  
Call Richard on 07748  
967 824

**• REDDY EDDY  
SPECIALIST PLASTER-  
ING AND RE-MOULDING.**  
Interior and exterior.  
020 8560 6782

**• MCPARTLIN PLASTER-  
ING**  
Claron McPartlin, 104 Avalon  
Road, Ealing, London  
W13 8BW  
020 8998-3455 07958  
445303 claron@mcp-  
artlin-plastering.co.uk

**• WEST LONDON PLAS-  
TERING**  
3 Devonshire Mead W4 2HA  
07953 533 329

**• LONDON TOP PLAS-  
TERING**  
07852 314416

**• CS Interiors**  
020 8813 0459

**• SURFACE  
SOLUTIONS PLASTERING**  
in Plastering and Related  
Building Services.  
Flat 16 The Towers, Lower  
Mortlake Road, Richmond,  
TW9 2NR  
07989 429882  
**• C P C UK LTD  
PLASTERING**  
020 8568 8787

**• TOP-NOTCH  
PLASTERING**  
16 Ravenscourt Road, Ham-  
mersmith, W6 0UG 07769  
586 116

**• E N PLASTERING**  
7a Market Place, London,  
W3 6QS 0779 2582392

### Plumbing & Heating

**• PLUMBER AT YOUR  
RESCUE**  
11a Chiswick High Road,  
London,  
W4 4PU  
020 8843 0814

**• MY PLUMBER**  
Grove Park  
Studios, 188-192 Sutton  
Court Road, London, W4  
3HR 020 8996 2930

**• W4 Plumber**  
18 566a Hall Gardens,  
London, W4 3BU  
020 3348 8096  
**• MY PLUMBER LTD**  
3 Brentford Business Park,  
Commerce Road, Brentford,  
TW8 8LG  
Telephone 020 3678  
5920

**• CHISWICK PLUMBING  
AND HEATING**  
54 Wellesley Road,  
Chiswick, W4 4AD 0203  
051 6052

**• CHISWICK PLUMBERS**  
566 Chiswick High Road,  
W4 5JA  
0203 051 6052  
**• MECHANICAL & ROOF-  
ING SERVICES LTD**  
8 Greenock Road, London,  
W3 8DU 020 8896 3483

**• THE LONDON PROPER-  
TY REPAIRS CO**  
The Barley Mow Centre,  
10 Barley Mow Passage,  
Chiswick, W4 4PH  
0844 800 5775

**• CHISWICK PLUMBING**  
64 Southfield Road, London,  
W4 5DQ 020 8994 816

**• J RP SKINNER**  
2 Winston Walk, London, W4  
5SH 020 8995-4135

**• MAGICAL PLUMBER**  
Flat 19 Abinger Court, 36  
Gordon Road, LONDON, W5  
2AF  
07835083119

### Tiling Services

**• SPOT ON TILERS**  
10 Barley Mow Passage,  
London, W4 4PH 020  
89876999

**• ZAIN IN STONE LTD**  
130 Hammersmith Road,  
London, W6 7JP 020 8846  
9635

**• A1 TILER**  
Upper Richmond Road West,  
London, SW14 7HX 0879  
7653943

**• PW TILING SERVICES**  
Serving Brentford, Chis-  
wick, Kew and Richmond  
07748 982 917

### Tuition

**• HARRIET ROBERTS  
VOCAL COACHING IN  
CHISWICK**  
Classes are running on Mon-  
days after school at Strand  
on The Green School from  
3:30 - 4:30  
for 8 weeks for pupils of  
Strand £10 per lesson but  
the whole course must be  
booked in advance (£9.00  
Harriet also welcomes adults  
and non-Strand pupils for  
private lessons £25.00 for  
45 mins.  
harmusic@googlemail.  
com 07796990745

**• DRUM TUITION**  
£35 per hour, £20 per half  
hour. Basics to advanced.  
drumw4@gmail.com  
07748 982 917

### Roofing

**• ROOFING THE WRIGHT  
WAY**  
07714745395  
/02035653423  
roofingthewrightway@  
yahoo.co.uk

**• McDONALD ROOFING**  
020 8896 1117  
020 8896 1118  
Fax:  
020 8896 1119  
enquiries@mcdonal-  
droofing.co.uk

**• RANKCOURT ROOFING  
CONTRACTORS**  
56a Kewbridge Road, TW8  
8EW  
020 8568 4588

**• P & J ROOFING &  
BUILDING CONTRAC-  
TORS LTD**  
35 Colville Road,  
W3 8BL  
020 8993 7700

**• CASTLE ROOFING &  
BUILDING SERVICES**  
146-148 Sheen Road, Rich-  
mond, TW9 1JU 020 8940  
6923

**• APOLLO ROOFING**  
Flat 8 Manor House, Manor  
Vale, Brentford, TW8 9GB  
020 8896 3789

**• GREENE ROOFING**  
67 Greyhound Road,  
London, W5 8PH 020 7381  
2950

### Windows

**• WILLIAMS WINDOW  
FITTERS AND CONSER-  
VATORIES**  
Based in Chiswick 07748  
967 824

**• TIMBER SASH WIN-  
DOWS**  
12 Wood close, Chiswick, W4  
1AR 020 8563 1265

**• SASH WINDOW SPE-  
CIALISTS**  
1 Castlebar Road, LONDON,  
W5 2DL 07957 499 056

**• WOOD WINDOWS RES-  
Toration LTD**  
Arch A, The Ham, Brentford,  
TW8 8EX 020 8587 1477

**• THE WOODEN WIN-  
DOW WORKSHOP LON-  
DON LTD**  
28-29 Ealing Broadway,  
London, W3 8PH 020  
87582786

**• RESTORATION WIN-  
DOWS & CONSERVATO-  
RIES**  
Unit 7 Roslin Square,  
London, W3 8DH 020  
87421122

**RUBBISH CLEARED**  
Bulldozers • Plant • Skips etc.  
**FREE ESTIMATES  
CHEAP RATES  
RELIABLE SERVICE  
C. WORDSWORTH  
Transport Co**  
LIGHT REMOVALS UNDERSTAND  
TEL: 020 8979 9940  
MOB: 07831 40446

## West 4 Joinery Ltd

## BESPOKE JOINERY



Your local bespoke joinery (Qualified joiners)

0208 741 8188 - 07599 690 577

info@west4joinery.com

**LOWEST PRICE IN LONDON**

374 Goldhawk Road, Stamford Brook Station, W6 0SB  
195 Prebend Gardens, Chiswick W4 1TP



# LONDON IRISH’S PAICE TO RETIRE AT THE END OF THE SEASON

London Irish’s David Paice announced that he is set to retire at the end of the season. The Australian-born hooker’s final home game will be this Sunday against Saracens where Irish must earn a bonus-point win against the reigning European champions and hope that Worcester are well beaten to stand any chance of staying up. The Exiles are then due to finish their season the following Saturday at Bath. The one-club man, who won the first of eight England international caps in 2008, is to bow out 15 years on from joining the Irish academy. After making his Irish debut in 2003, he has since made 288 appearances for the club, more than any other Exiles player in the professional era. “I would like to thank London Irish for giving me the

opportunity to play professional rugby,” stated Paice. “London Irish is a special club, with fantastic supporters and I’ve made friends for life. There are so many people that I would like to thank, but Toby Booth, Brian Smith, Kieran McCarthy, Gary Gold, Nick Kennedy and Conor O’Shea have played an integral role in my career.”



## Fulham Vs Sunderland Preview

Last week, Sunderlands relegation was confirmed after a 2-1 loss to Burton, meaning they have suffered two relegations in two years. Now the Black Cats have to travel to Craven Cottage to face a Fulham side who are undefeated in their previous 22 fixtures, there is no doubt that the hosts are the strong favourites. Fulham proved their prowess when they casually swept aside an in-form Millwall side at The Den. The Cottagers’ 3-0 victory meant that they had ended their London rival’s unbeaten run of 17 matches. It also meant that Fulham are continuing to pressure Cardiff for the second automatic promotion spot as they’re only one point behind them. Fulham fans were also given a huge boost of hope on Tuesday night when the Bluebirds lost their game in hand, against Derby, 3-1. It will be interesting to see the challenge that Sunderland will pose on Friday night, or if they pose one at all. Recently the club has been in disarray, as shown earlier this week when the clubs Chief Executive exclaimed “Some of the



players that we have probably don’t want to be here, and haven’t wanted to be here for some time.” Furthermore, following the club’s relegation, a consortium including for-

mer Hull City owner Adam Pearson has ended its interest in buying Sunderland. The takeover was necessary for the Black Cats as Uefa’s annual report lists Sunderland

as having the 13th highest net debt in Europe. Fulham will be expecting to earn a vital three points with ease and continue to snap at the heels of Cardiff.

## BARNSLEY VS BRENTFORD PREVIEW



On Saturday, Brentford will be hoping to continue their late push for promotion on Saturday when they visit Oakwell to face Barnsley. The Bees are in fine form having been undefeated in their previous seven matches, whereas a struggling Barnsley are winless in their last four games. This fixture is crucial for both sides as whilst Brentford are in eighth, chasing the last playoff position which they’re three points from, the hosts are fighting to remain in the Championship. They’re currently in the relegation zone

and two points from safety, meaning they will be desperate for all three points. After the Bees’ dramatic derby day victory over Queens Park Rangers, Brentford boss Dean Smith spoke on his side’s form and their upcoming fixture. “These players are great to work with and deserve to be where they are in the league with two games to go. We want to be in the play-off places after the final game but it will be tough at Barnsley who are fighting for their lives.”

A man with a beard and short dark hair is smiling and looking to his right. He is wearing a dark grey V-neck t-shirt with a small white Nike swoosh on the left chest. He is in a gym setting with various exercise machines visible in the background. A green square logo with the word "roko" in white lowercase letters and "HEALTH CLUBS" in smaller white uppercase letters below it is in the top left corner. A green square with the text "feel amazing" in white lowercase letters is overlaid on the man's chest. At the bottom, a green banner contains the text "enjoy 2 weeks for just £30" in large, bold, white lowercase letters. Below this, another green banner contains the text "• pool • classes • gym • spa" in white lowercase letters. At the very bottom, a green banner contains the text "Roko Health Club Chiswick Bridge call us on 0208 747 5750 or visit roko.co.uk" in white lowercase letters.

roko  
HEALTH CLUBS

feel  
amazing

enjoy 2 weeks  
for just £30

• pool • classes • gym • spa

Roko Health Club Chiswick Bridge  
call us on 0208 747 5750 or visit roko.co.uk



# DERBY DAY DELIGHT FOR BEES WHO MAINTAIN PLAYOFF PUSH

Louis Yamani  
Sports Editor

On Saturday, Griffin Park hosted Queens Park Rangers for the long awaited West London Derby. The Hoops players were met by a roaring home crowd, the visitors were hoping to take all three points and hinder Brentford's late push for the play off positions. After just five minutes, the first chance fell to the hosts. Whilst playing out from the back, an awkward touch from Scowen allowed Sawyers to pounce and win possession on the edge of QPR's box. A clever give-and-go with Canos gave Sawyers the space to unleash a venomous strike towards the bottom corner. Ingram did extremely well to get his fingertips to the ball to put it out for a corner. Only ten minutes later Canos opened the scoring from a corner set piece. MacLeod whipped the ball towards the front post, which Barbet flicked behind him towards the back post. Dalsgaard then acrobatically fired it back into the centre of the box where Canos was the first to react within a crowd of bodies. Before being taken down, the Spaniard was able to fire the

ball into the roof of the net, giving the Bees a deserved, early lead in this electric derby. In the 37th minute, Brentford came close to doubling their lead. Canos threaded the ball through to Watkins, who found himself in acres of space on the left side of the box. The youngster had the time to turn and then pick fire a powerful strike towards the near post. Ingram's strong pounce and win possession on the edge of QPR's box. A clever give-and-go with Canos gave Sawyers the space to unleash a venomous strike towards the bottom corner. Ingram did extremely well to get his fingertips to the ball to put it out for a corner. Only ten minutes later Canos opened the scoring from a corner set piece. MacLeod whipped the ball towards the front post, which Barbet flicked behind him towards the back post. Dalsgaard then acrobatically fired it back into the centre of the box where Canos was the first to react within a crowd of bodies. Before being taken down, the Spaniard was able to fire the

gram, who read the forwards mind, allowing him to simply smother the shot and keep his side in the game. Moments before half time the Hoops found an equaliser against the run of play. Luongo drove into the Brentford box unchallenged and after a scruffy one-two with Wszolek, the Australian was through on goal. His curled shot towards the top corner was denied by an acrobatic save from Bentley. However, the ball landed at the feet of Sylla who casu-

ally slotted the ball into the back of an empty net, to make the score 1-1 on the stroke of half time. QPR came close to taking the lead in the 60th minute following a well worked counter attack. Bidwell's low cross was cleared, but only as far as Luongo on the edge of the box. Despite his first shot being blocked, the ball fortunately fell right back to Luongo, who controlled the ball with his chest, then fired a thunderous volley towards

goal. The attempt took a deflection, yet Bentley managed to adjust his body and palm the ball over the bar. Eight minutes later the Bees were able to find the lead in spectacular style. Following a series of challenges, the ball was eventually poked to Jozefzoon on the edge of the box. The Dutchman found himself isolated against Bidwell and a clever dummied shot sent the left back sliding, allowing Jozefzoon to put the ball on his left foot and won-

derfully stroke a curling shot into the top corner. Although the closing stage of the game was a nervous one for the hosts, they weathered QPR's later pressure to win the clash 2-1. Since Millwall lost to Fulham on Friday, the Bees are now only one point away from the play off positions and have moved up to eighth.



# Fulham Thrash London Rivals In Dominant Display



Last week, Fulham ended Millwall's unbeaten streak of 17 games, whilst extending their own streak to 22 with a triumphant victory at The Den. Despite winning 3-0 which suggests it was a comfortable three points, the first half somehow finished goalless. It was the Cottagers who were most fortunate to go into the break unscathed. Only four minutes into the match, Bettinelli was just about able to palm Cooper's rocketing header onto the bar. Right before the half hour mark, Fulham faced another scare. After a poor punch from Bettinelli, Wallace attempted to slot the ball into the open net, however, a wonderful sliding block from Ream on the line, ensured their clean sheet remained intact. From then on, the visitors dominated the remainder of the game. Fulham came close

to opening the scoring moments before half time when Targetts wonderful strike from long range was denied by the bar. The Cottagers immediately broke the deadlock one minute after the break through Championship Player of the Year; Ryan Sessegnon. Archer spilt a shot from range, and the tenacious youngster was the first to pounce on the mistake. He then clinically slotted it into the back of the net. Ten minutes later Fulham doubled their lead when McDonald strode towards the edge of the opposition box, and once he reached it, he unleashed a thunderous strike towards the top corner. Although Archer got a hand to it, the shot was much to powerful for the keeper to direct away from goal. The Cottagers secured all three points with one minute left on the clock. Kalas drove

past countless Millwall players with a superb solo run, then simply fed the ball to Mitrovic who was through on goal. The Serbian striker did not hesitate before casually firing into the top corner, making the score 3-0. The referee blew the final whistle just moments later, meaning Fulham maintain their pressure on Cardiff as they're just one point behind the Bluebirds, who also have a game in hand. Since the remainder of Fulham's fixtures are against sides in the lower half of the table, the Cottagers are patiently waiting for Neil Warnock's side to slip up so they can snatch automatic promotion from their grasp.

## What are you waiting for?

Whether it's helping to pick out the perfect fit, offering some helpful advice, or just having the kit you need when you need it; we're always ready to kick-start your next adventure.

### Perfection used to be hard

With us it comes as standard. Nothing ruins a trip like a badly fitted pair of boots, or an unbalanced rucksack. In one of our free boot and rucksack one-to-ones our experts will help you find the perfect fit.

### Great advice is priceless

That's why we give it to you for free. Just let us know where you're going and what you're doing and our experts will talk you through all the kit that meets your needs. To arrange a free kit talk, just ask in-store.

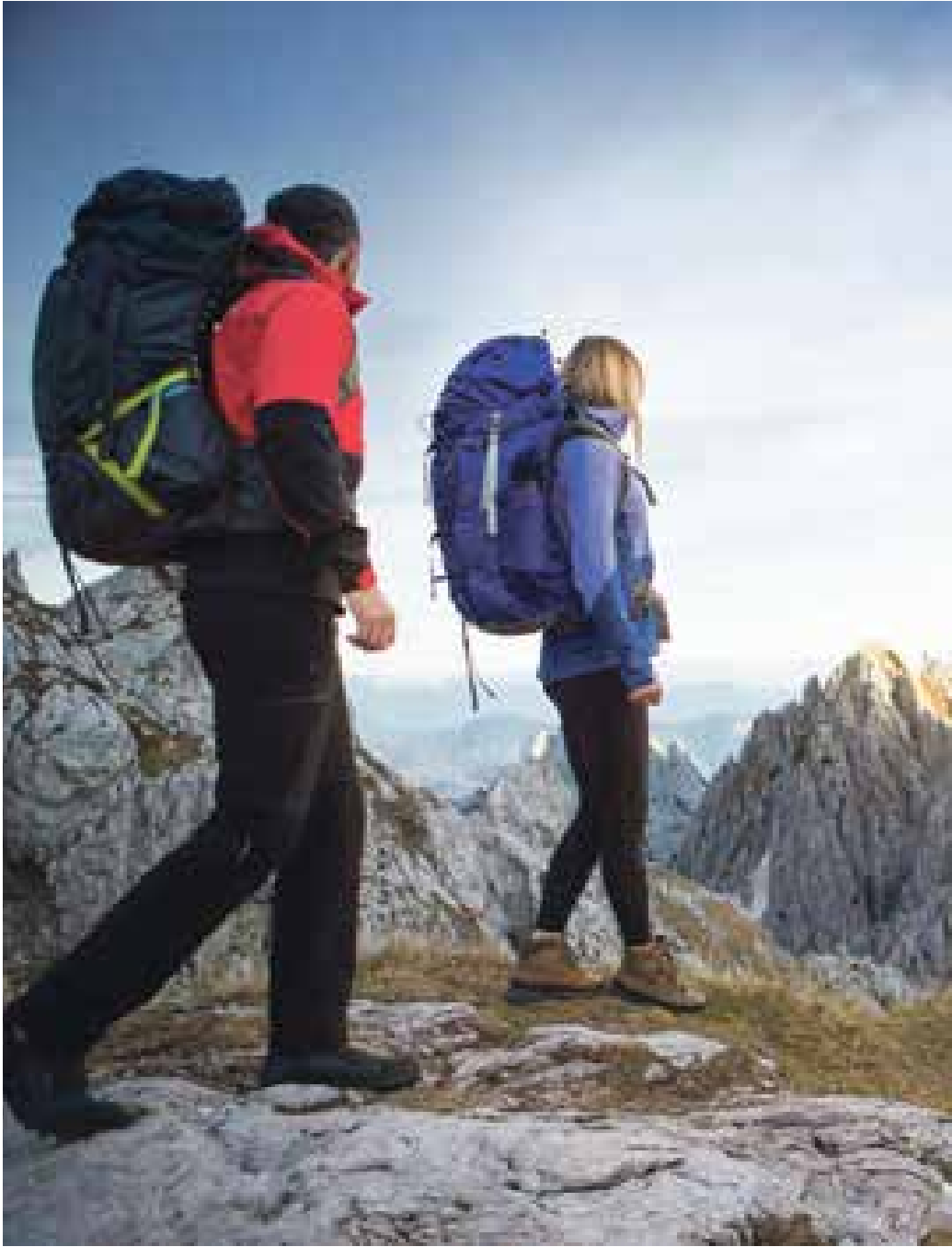
### We expect the unexpected

There's nothing worse than being under-prepared when adventure calls. With our free Click & Collect service you can order all the kit you need and arrange to pick it up from thousands of locations across the UK. So when adventure calls, answer.



**Advice born from experience since 1974**  
**Chiswick High Rd, W4 4HH | cotswoldoutdoor.com**

**COTSWOLD**  
outdoor





Only the very best brands

**Vango**

**MSR**

TERRA  
**NOVA**  
EQUIPMENT

**OSPREY**

**VAUDE**

**COTSWOLD**  
outdoor

Find more expert camping advice in our Chiswick store or at  
[cotswoldoutdoor.com/the-knowledge](https://cotswoldoutdoor.com/the-knowledge)